

## Product datasheet for **AP50210PU-N**

### **APOBEC3F (N-term) Rabbit Polyclonal Antibody**

#### **Product data:**

Product Type:	Primary Antibodies
Applications:	FC, IHC, WB
Recommended Dilution:	<b>ELISA:</b> 1/1000. <b>Western blotting:</b> 1/100 - 1/500. <b>Immunohistochemistry:</b> 1/50 - 1/100. <b>Flow cytometry:</b> 1/10 - 1/50.
Reactivity:	Human
Host:	Rabbit
Isotype:	Ig
Clonality:	Polyclonal
Immunogen:	KLH conjugated synthetic peptide between 28~57 amino acids from the N-terminal region of human APOBEC3F
Specificity:	This antibody reacts to APOBEC3F.
Formulation:	PBS containing 0.09% (W/V) sodium azide as preservative State: Aff - Purified State: Liquid purified Ig fraction
Concentration:	lot specific
Purification:	Affinity chromatography on Protein A
Conjugation:	Unconjugated
Storage:	Store the antibody undiluted at 2-8°C for one month or (in aliquots) at -20°C for longer. Avoid repeated freezing and thawing.
Stability:	Shelf life: one year from despatch.
Gene Name:	Homo sapiens apolipoprotein B mRNA editing enzyme catalytic subunit 3F (APOBEC3F), transcript variant 1
Database Link:	<a href="#">Entrez Gene 200316 Human Q8IUX4</a>



[View online »](#)

**Background:**

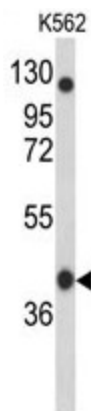
This protein is a member of the cytidine deaminase gene family. It is one of seven related genes or pseudogenes found in a cluster, thought to result from gene duplication, on chromosome 22. Members of the cluster encode proteins that are structurally and functionally related to the C to U RNA-editing cytidine deaminase APOBEC1. It is thought that the proteins may be RNA editing enzymes and have roles in growth or cell cycle control.

**Synonyms:**

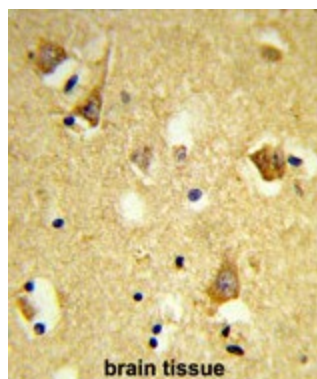
ARP8; BK150C2.4.MRNA; KA6; MGC74891

**Note:**

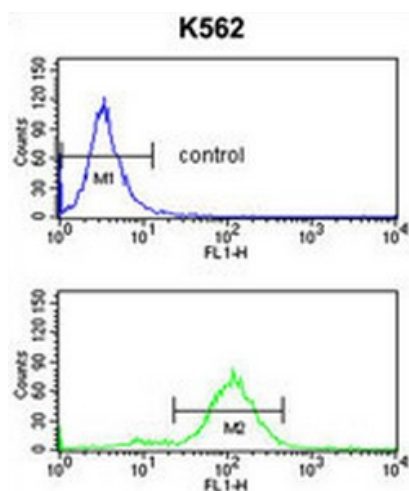
**Molecular Weight:** 45020 Da

**Product images:**


Western blot analysis of purified Pab.



Formalin-fixed and paraffin-embedded human brain tissue reacted with APOBEC3F Antibody (N-term), which was peroxidase-conjugated to the secondary antibody, followed by DAB staining. This data demonstrates the use of this antibody for immunohistochemistry; clinical relevance has not been evaluated.



APOBEC3F Antibody (N-term) flow cytometry analysis of K562 cells (bottom histogram) compared to a negative control cell (top histogram). FITC-conjugated goat-anti-rabbit secondary antibodies were used for the analysis.