

## Product datasheet for **AP50207PU-N**

### APLP2 (C-term) Rabbit Polyclonal Antibody

#### Product data:

Product Type:	Primary Antibodies
Applications:	WB
Recommended Dilution:	<b>ELISA:</b> 1/1000. <b>Western blotting:</b> 1/100 - 1/500.
Reactivity:	Human, Mouse
Host:	Rabbit
Isotype:	Ig
Clonality:	Polyclonal
Immunogen:	KLH conjugated synthetic peptide between 592-621 amino acids from the C-terminal region of human APLP2
Specificity:	This antibody reacts to APPL2.
Formulation:	PBS containing 0.09% (W/V) sodium azide as preservative State: Aff - Purified State: Liquid purified Ig fraction
Concentration:	lot specific
Purification:	Affinity chromatography on Protein A
Conjugation:	Unconjugated
Storage:	Store the antibody undiluted at 2-8°C for one month or (in aliquots) at -20°C for longer. Avoid repeated freezing and thawing.
Stability:	Shelf life: one year from despatch.
Gene Name:	amyloid beta precursor like protein 2
Database Link:	<a href="#">Entrez Gene 11804 Mouse</a> <a href="#">Entrez Gene 334 Human</a> <a href="#">Q06481</a>
Background:	APLP2 may play a role in the regulation of hemostasis. The soluble form may have inhibitory properties towards coagulation factors. May interact with cellular G-protein signaling pathways. May bind to the DNA 5'-GTCACATG-3'(CDEI box). Inhibits trypsin, chymotrypsin, plasmin, factor XIA and plasma and glandular kallikrein.
Synonyms:	APPH, CDEI box-binding protein, CDEBP

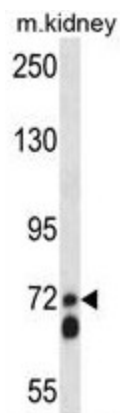


[View online »](#)

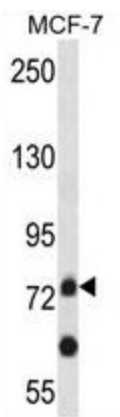
Note: **Molecular Weight:** 86956 Da

Protein Families: Druggable Genome, Transmembrane

### Product images:



APLP2 Antibody (C-term) western blot analysis in mouse kidney tissue lysates (35ug/lane). This demonstrates the APLP2 antibody detected the APLP2 protein (arrow).



APLP2 Antibody (C-term) western blot analysis in MCF-7 cell line lysates (35ug/lane). This demonstrates the APLP2 antibody detected the APLP2 protein (arrow).