

## Product datasheet for **AP50206PU-N**

### Serum Amyloid P (APCS) (C-term) Rabbit Polyclonal Antibody

#### Product data:

Product Type:	Primary Antibodies
Applications:	ELISA, IHC, WB
Recommended Dilution:	<b>ELISA:</b> 1/1000. <b>Western blotting:</b> 1/1000. <b>Immunohistochemistry on Paraffin Sections:</b> 1/50-1/100.
Reactivity:	Human
Host:	Rabbit
Isotype:	Ig
Clonality:	Polyclonal
Immunogen:	KLH conjugated synthetic peptide between 151-178 amino acids from the C-terminal region of Human APCS
Specificity:	This antibody reacts to Serum amyloid P-component.
Formulation:	PBS containing 0.09% (W/V) Sodium Azide as preservative State: Aff - Purified State: Liquid purified Ig fraction
Concentration:	lot specific
Purification:	Protein A column, followed by peptide affinity purification
Conjugation:	Unconjugated
Storage:	Store undiluted at 2-8°C for one month or (in aliquots) at -20°C for longer. Avoid repeated freezing and thawing.
Stability:	Shelf life: one year from despatch.
Gene Name:	amyloid P component, serum
Database Link:	<a href="#">Entrez Gene 325 Human P02743</a>



[View online »](#)

## Background:

The protein encoded by this gene is a glycoprotein, belonging to the pentraxin family of proteins, which has a characteristic pentameric organization. These family members have considerable sequence homology which is thought to be the result of gene duplication. The binding of the encoded protein to proteins in the pathological amyloid cross-beta fold suggests its possible role as a chaperone. This protein is also thought to control the degradation of chromatin. It has been demonstrated that this protein binds to apoptotic cells at an early stage, which raises the possibility that it is involved in dealing with apoptotic cells in vivo.

## Synonyms:

SAP, APCS, PTX2, 9.5S alpha-1-glycoprotein

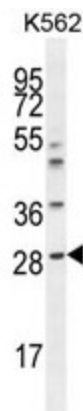
## Note:

**Molecular Weight:** 25387 Da

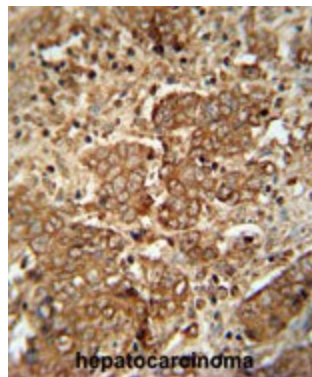
## Protein Families:

Druggable Genome, Secreted Protein

## Product images:



APCS Antibody (C-term) western blot analysis in K562 cell line lysates (35ug/lane). This demonstrates the APCS antibody detected the APCS protein (arrow).



APCS antibody (C-term) immunohistochemistry analysis in formalin fixed and paraffin embedded human hepatocarcinoma followed by peroxidase conjugation of the secondary antibody and DAB staining. This data demonstrates the use of the APCS antibody (C-term) for immunohistochemistry. Clinical relevance has not been evaluated.