

Product datasheet for **AP50202PU-N**

AP2M1 (C-term) Rabbit Polyclonal Antibody

Product data:

Product Type:	Primary Antibodies
Applications:	FC, WB
Recommended Dilution:	ELISA: 1/1000. Western blotting: 1/100-1/500. Flow Cytometry: 1/10-1/50
Reactivity:	Human, Mouse
Host:	Rabbit
Isotype:	Ig
Clonality:	Polyclonal
Immunogen:	KLH conjugated synthetic peptide between 386-415 amino acids from the C-terminal region of Human AP2M1
Specificity:	This antibody recognizes AP2 complex subunit mu-1.
Formulation:	PBS State: Aff - Purified State: Liquid purified Ig fraction Preservative: 0.09% (W/V) Sodium Azide
Concentration:	lot specific
Purification:	Affinity Chromatography on Protein A
Conjugation:	Unconjugated
Storage:	Store the antibody undiluted at 2-8°C for one month or (in aliquots) at -20°C for longer. Avoid repeated freezing and thawing.
Stability:	Shelf life: one year from despatch.
Predicted Protein Size:	49655 Da
Gene Name:	adaptor related protein complex 2 mu 1 subunit
Database Link:	Entrez Gene 11773 Mouse Entrez Gene 1173 Human Q96CW1



[View online »](#)

Background:

This gene encodes a subunit of the heterotetrameric coat assembly protein complex 2 (AP2), which belongs to the adaptor complexes medium subunits family. The encoded protein is required for the activity of a vacuolar ATPase, which is responsible for proton pumping occurring in the acidification of endosomes and lysosomes. The encoded protein may also play an important role in regulating the intracellular trafficking and function of CTLA-4 protein. Two transcript variants encoding different isoforms have been found for this gene.

Synonyms:

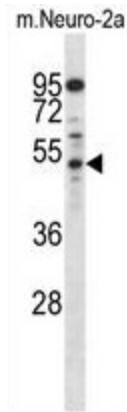
CLAPM1, KIAA0109, Adaptin-mu2, AP-2 mu-2 chain

Protein Families:

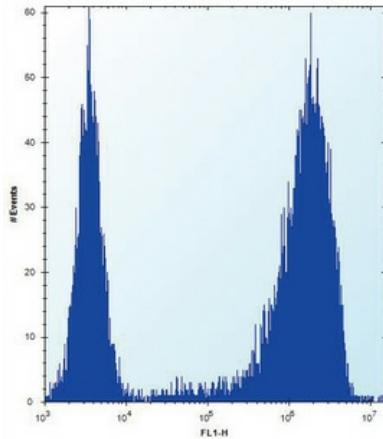
Druggable Genome

Protein Pathways:

Endocytosis, Huntington's disease

Product images:


Western blot analysis in mouse Neuro-2a cell line lysates (35ug/lane) using AP2M1 Antibody (C-term). This demonstrates the AP2M1 antibody detected the AP2M1 protein (arrow).



AP2M1 Antibody (C-term) flow cytometric analysis of Neuro-2a cells (right histogram) compared to a negative control cell (left histogram). FITC-conjugated donkey-anti-rabbit secondary antibodies were used for the analysis.