

Product datasheet for **AP50201PU-N**

AP2B1 (Center) Rabbit Polyclonal Antibody

Product data:

Product Type:	Primary Antibodies
Applications:	WB
Recommended Dilution:	ELISA: 1/1000. Western blotting: 1/100 - 1/500.
Reactivity:	Human
Host:	Rabbit
Isotype:	Ig
Clonality:	Polyclonal
Immunogen:	KLH conjugated synthetic peptide between 516-546 amino acids from the Central region of human AP2B1
Specificity:	This antibody reacts to AP2 complex subunit beta-1.
Formulation:	PBS containing 0.09% (W/V) sodium azide as preservative State: Aff - Purified State: Liquid purified Ig fraction
Concentration:	lot specific
Purification:	Affinity chromatography on Protein A
Conjugation:	Unconjugated
Storage:	Store the antibody undiluted at 2-8°C for one month or (in aliquots) at -20°C for longer. Avoid repeated freezing and thawing.
Stability:	Shelf life: one year from despatch.
Gene Name:	adaptor related protein complex 2 beta 1 subunit
Database Link:	Entrez Gene 163 Human P63010
Background:	The protein encoded by this gene is one of two large chain components of the assembly protein complex 2, which serves to link clathrin to receptors in coated vesicles. The encoded protein is found on the cytoplasmic face of coated vesicles in the plasma membrane. Two transcript variants encoding different isoforms have been found for this gene.
Synonyms:	ADTB2, CLAPB1, Beta2-adaptin, Beta adaptin, AP105B

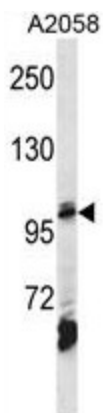


[View online »](#)

Note: **Molecular Weight:** 104553 Da

Protein Families: Druggable Genome

Protein Pathways: Endocytosis, Huntington's disease

Product images:

AP2B1 Antibody (Center) western blot analysis in A2058 cell line lysates (35ug/lane). This demonstrates the AP2B1 antibody detected the AP2B1 protein (arrow).