

Product datasheet for **AP50198PU-N**

AP1M1 (Center) Rabbit Polyclonal Antibody

Product data:

Product Type:	Primary Antibodies
Applications:	WB
Recommended Dilution:	ELISA: 1/1000. Western blotting: 1/1000.
Reactivity:	Human, Mouse
Host:	Rabbit
Isotype:	Ig
Clonality:	Polyclonal
Immunogen:	KLH conjugated synthetic peptide between 205-234 amino acids from the Central region of human AP1M1
Specificity:	This antibody reacts to AP1 complex subunit mu-1.
Formulation:	PBS containing 0.09% (W/V) sodium azide as preservative State: Aff - Purified State: Liquid purified Ig fraction
Concentration:	lot specific
Purification:	This antibody is purified through a protein A column, followed by peptide affinity purification
Conjugation:	Unconjugated
Storage:	Store the antibody undiluted at 2-8°C for one month or (in aliquots) at -20°C for longer. Avoid repeated freezing and thawing.
Stability:	Shelf life: one year from despatch.
Gene Name:	adaptor related protein complex 1 mu 1 subunit
Database Link:	Entrez Gene 11767 Mouse Entrez Gene 8907 Human Q9BXS5



[View online »](#)

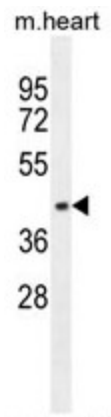
Background: The protein encoded by this gene is the medium chain of the trans-Golgi network clathrin-associated protein complex AP-1. The other components of this complex are beta-prime-adaptin, gamma-adaptin, and the small chain AP1S1. This complex is located at the Golgi vesicle and links clathrin to receptors in coated vesicles. These vesicles are involved in endocytosis and Golgi processing. Alternatively spliced transcript variants encoding distinct protein isoforms have been found for this gene.

Synonyms: CLTNM, Mu-adaptin 1, Mu1A-adaptin

Note: **Molecular Weight:** 48587 Da

Protein Pathways: Lysosome

Product images:



AP1M1 Antibody (Center) western blot analysis in mouse heart tissue lysates (35ug/lane). This demonstrates the AP1M1 antibody detected the AP1M1 protein (arrow).