

Product datasheet for **AP50197PU-N**

ANR52 (ANKRD52) (N-term) Rabbit Polyclonal Antibody

Product data:

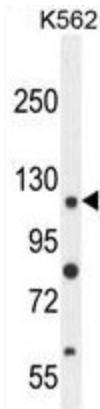
Product Type:	Primary Antibodies
Applications:	FC, WB
Recommended Dilution:	ELISA: 1/1000. Western blotting: 1/100 - 1/500. Flow Cytometry: 1/10 - 1/50.
Reactivity:	Human
Host:	Rabbit
Isotype:	Ig
Clonality:	Polyclonal
Immunogen:	KLH conjugated synthetic peptide between 436-465 amino acids from the N-terminal region of human ANR52
Specificity:	This antibody reacts to ANR52.
Formulation:	PBS containing 0.09% (W/V) sodium azide as preservative State: Aff - Purified State: Liquid purified Ig fraction
Concentration:	lot specific
Purification:	Affinity chromatography on Protein A
Conjugation:	Unconjugated
Storage:	Store the antibody undiluted at 2-8°C for one month or (in aliquots) at -20°C for longer. Avoid repeated freezing and thawing.
Stability:	Shelf life: one year from despatch.
Gene Name:	ankyrin repeat domain 52
Database Link:	Entrez Gene 283373 Human Q8NB46
Background:	Putative regulatory subunit of protein phosphatase 6 (PP6) that may be involved in the recognition of phosphoprotein substrates.
Synonyms:	Serine/threonine-protein phosphatase 6 regulatory ankyrin repeat subunit C,ANKRD52



[View online »](#)

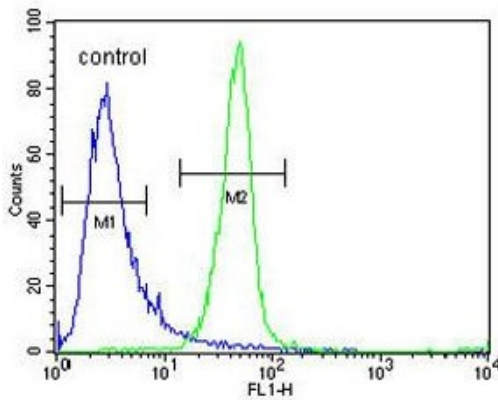
Note: **Molecular Weight:** 115077 Da

Product images:



ANR52 Antibody (N-term) western blot analysis in K562 cell line lysates (35ug/lane). This demonstrates the ANR52 antibody detected the ANR52 protein (arrow).

K562



ANR52 Antibody (N-term) flow cytometric analysis of K562 cells (right histogram) compared to a negative control cell (left histogram). FITC-conjugated goat-anti-rabbit secondary antibodies were used for the analysis.