

## Product datasheet for **AP50192PU-N**

### Anoctamin 7 (ANO7) (N-term) Rabbit Polyclonal Antibody

#### Product data:

Product Type:	Primary Antibodies
Applications:	FC, WB
Recommended Dilution:	<b>Peptide ELISA:</b> 1/1000. <b>Western blotting:</b> 1/2000. <b>Flow cytometry:</b> 1/10-1750.
Reactivity:	Human
Host:	Rabbit
Isotype:	Ig
Clonality:	Polyclonal
Immunogen:	KLH conjugated synthetic peptide between 106~135 amino acids from the N-terminal region of Human ANO7
Specificity:	This antibody reacts to ANO7.
Formulation:	PBS containing 0.09% (W/V) sodium azide as preservative State: Aff - Purified State: Liquid purified Ig fraction
Concentration:	lot specific
Purification:	Affinity chromatography on Protein A
Conjugation:	Unconjugated
Storage:	Store the antibody undiluted at 2-8°C for one month or (in aliquots) at -20°C for longer. Avoid repeated freezing and thawing.
Stability:	Shelf life: one year from despatch.
Gene Name:	anoctamin 7
Database Link:	<a href="#">Entrez Gene 50636 Human Q6IWH7</a>
Background:	ANO7 may act as a calcium-activated chloride channel. This protein May play a role in cell-cell interactions.
Synonyms:	NGEP, PCANAP5, TMEM16G, D-TMPP, IPCA-5

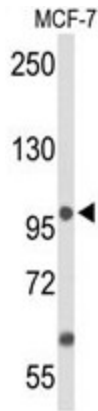


[View online »](#)

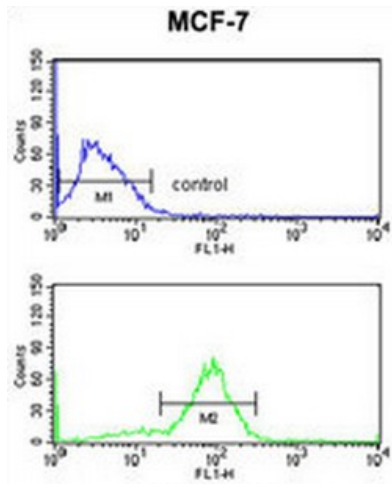
**Note:** **Molecular Weight:** 105531 Da

**Protein Families:** Transmembrane

**Product images:**



Western blot analysis of ANO7 Antibody (N-term) in MCF-7 cell line lysates (35ug/lane). ANO7 (arrow) was detected using the purified Pab.



ANO7 Antibody (N-term) flow cytometry analysis of MCF-7 cells (bottom histogram) compared to a negative control cell (top histogram). FITC-conjugated goat-anti-rabbit secondary antibodies were used for the analysis.