

## Product datasheet for **AP50190PU-N**

### **ANKRD6 (Center) Rabbit Polyclonal Antibody**

#### **Product data:**

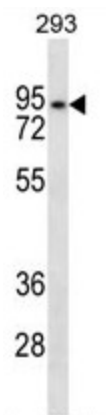
Product Type:	Primary Antibodies
Applications:	WB
Recommended Dilution:	<b>ELISA:</b> 1/1000. <b>Western blotting:</b> 1/100 - 1/500.
Reactivity:	Human
Host:	Rabbit
Isotype:	Ig
Clonality:	Polyclonal
Immunogen:	KLH conjugated synthetic peptide between 313-343 amino acids from the Central region of human ANKRD6
Specificity:	This antibody reacts to ANKRD6.
Formulation:	PBS containing 0.09% (W/V) sodium azide as preservative State: Aff - Purified State: Liquid purified Ig fraction
Concentration:	lot specific
Purification:	Affinity chromatography on Protein A
Conjugation:	Unconjugated
Storage:	Store the antibody undiluted at 2-8°C for one month or (in aliquots) at -20°C for longer. Avoid repeated freezing and thawing.
Stability:	Shelf life: one year from despatch.
Gene Name:	ankyrin repeat domain 6
Database Link:	<a href="#">Entrez Gene 22881 Human Q9Y2G4</a>
Background:	ANKRD6 recruits CKI-epsilon to the beta-catenin degradation complex that consists of AXN1 or AXN2 and GSK3-beta and allows efficient phosphorylation of beta-catenin, thereby inhibiting beta-catenin/Tcf signals.
Synonyms:	KIAA0957



[View online »](#)

Note: **Molecular Weight:** 79957 Da

**Product images:**



ANKRD6 Antibody (Center) western blot analysis in 293 cell line lysates (35ug/lane). This demonstrates the ANKRD6 antibody detected the ANKRD6 protein (arrow).