

Product datasheet for **AP50189PU-N**

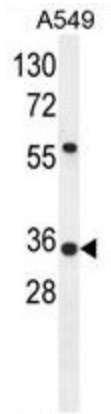
ANKRD58 (SOWAHD) (C-term) Rabbit Polyclonal Antibody

Product data:

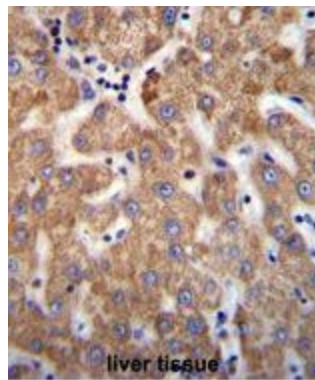
Product Type:	Primary Antibodies
Applications:	IF, IHC, WB
Recommended Dilution:	ELISA: 1/1000. Western blotting: 1/100 - 1/500. Immunohistochemistry: 1/10 - 1/50. Immunofluorescence: 1/10 - 1/50.
Reactivity:	Human
Host:	Rabbit
Isotype:	Ig
Clonality:	Polyclonal
Immunogen:	KLH conjugated synthetic peptide between 203-233 amino acids from the C-terminal region of human ANKRD58
Specificity:	This antibody reacts to ANKRD58.
Formulation:	PBS containing 0.09% (W/V) sodium azide as preservative State: Aff - Purified State: Liquid purified Ig fraction
Concentration:	lot specific
Purification:	Affinity chromatography on Protein A
Conjugation:	Unconjugated
Storage:	Store the antibody undiluted at 2-8°C for one month or (in aliquots) at -20°C for longer. Avoid repeated freezing and thawing.
Stability:	Shelf life: one year from despatch.
Gene Name:	so sondowah ankyrin repeat domain family member D
Database Link:	Entrez Gene 347454 Human A6NJG2
Synonyms:	ANKRD58, Protein so sondowah homolog D
Note:	Molecular Weight: 33803 Da



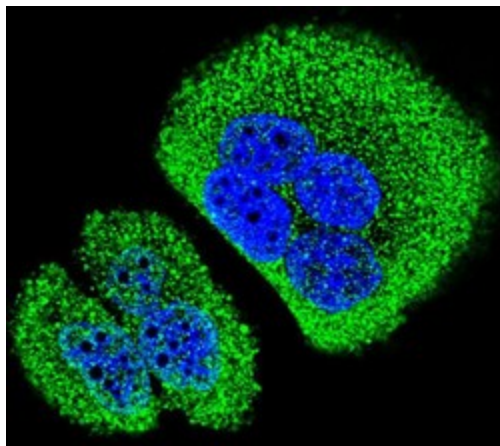
[View online »](#)

Product images:

ANKRD58 Antibody (C-term) western blot analysis in A549 cell line lysates (35ug/lane). This demonstrates the ANKRD58 antibody detected the ANKRD58 protein (arrow).



ANKRD58 Antibody (C-term) immunohistochemistry analysis in formalin fixed and paraffin embedded human liver tissue followed by peroxidase conjugation of the secondary antibody and DAB staining. This data demonstrates the use of ANKRD58 Antibody (C-term) for immunohistochemistry. Clinical relevance has not been evaluated.



Confocal immunofluorescent analysis of ANKRD58 Antibody (C-term) with A549 cell followed by Alexa Fluor 488-conjugated goat anti-rabbit IgG (green). DAPI was used to stain the cell nuclear (blue).