

Product datasheet for **AP50188PU-N**

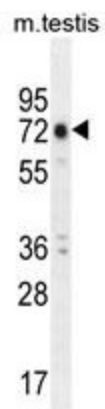
ANKRD5 (ANKEF1) (C-term) Rabbit Polyclonal Antibody

Product data:

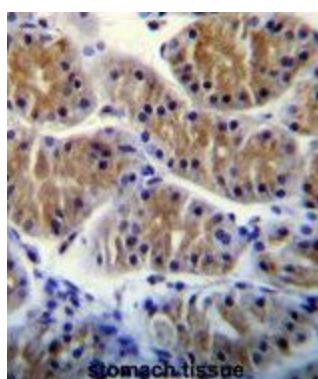
Product Type:	Primary Antibodies
Applications:	IHC, WB
Recommended Dilution:	ELISA: 1/1000. Western blotting: 1/100 - 1/500. Immunohistochemistry on paraffin sections: 1/10 - 1/50.
Reactivity:	Human, Mouse
Host:	Rabbit
Isotype:	Ig
Clonality:	Polyclonal
Immunogen:	KLH conjugated synthetic peptide between 728-757 amino acids from the C-terminal region of human ANKRD5
Specificity:	This antibody reacts to ANKRD5.
Formulation:	PBS containing 0.09% (W/V) sodium azide as preservative State: Aff - Purified State: Liquid purified Ig fraction
Concentration:	lot specific
Purification:	Affinity chromatography on Protein A
Conjugation:	Unconjugated
Storage:	Store the antibody undiluted at 2-8°C for one month or (in aliquots) at -20°C for longer. Avoid repeated freezing and thawing.
Stability:	Shelf life: one year from despatch.
Gene Name:	ankyrin repeat and EF-hand domain containing 1
Database Link:	Entrez Gene 319196 Mouse Entrez Gene 63926 Human Q9NU02
Synonyms:	ANKRD5; dj839B4.6
Note:	Molecular Weight: 86664 Da



[View online »](#)

Product images:

ANKRD5 Antibody (C-term) western blot analysis in mouse testis tissue lysates (35ug/lane). This demonstrates the ANKRD5 antibody detected the ANKRD5 protein (arrow).



ANKRD5 Antibody (C-term) immunohistochemistry analysis in formalin fixed and paraffin embedded human stomach tissue followed by peroxidase conjugation of the secondary antibody and DAB staining. This data demonstrates the use of ANKRD5 Antibody (C-term) for immunohistochemistry. Clinical relevance has not been evaluated.