

## Product datasheet for **AP50187PU-N**

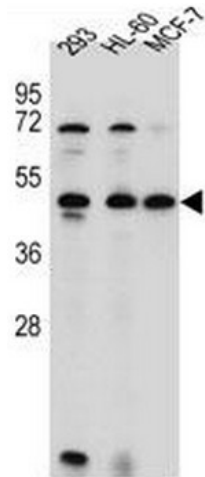
### **ANKRD40 (C-term) Rabbit Polyclonal Antibody**

#### **Product data:**

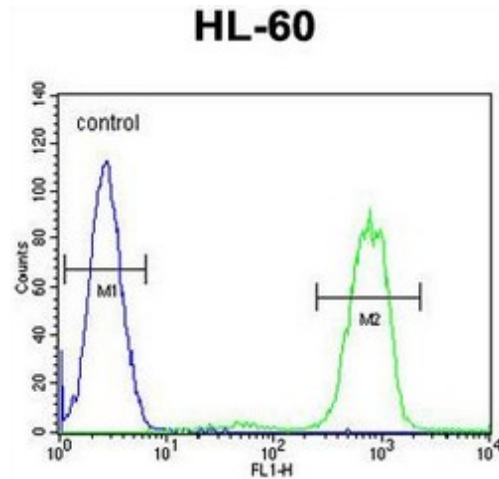
Product Type:	Primary Antibodies
Applications:	FC, WB
Recommended Dilution:	<b>ELISA:</b> 1/1000. <b>Western blotting:</b> 1/100 - 1/500. <b>Flow Cytometry:</b> 1/10 - 1/50.
Reactivity:	Human
Host:	Rabbit
Isotype:	Ig
Clonality:	Polyclonal
Immunogen:	KLH conjugated synthetic peptide between 263-292 amino acids from the C-terminal region of human ANKRD40
Specificity:	This antibody reacts to ANKRD40.
Formulation:	PBS containing 0.09% (W/V) sodium azide as preservative State: Aff - Purified State: Liquid purified Ig fraction
Concentration:	lot specific
Purification:	Affinity chromatography on Protein A
Conjugation:	Unconjugated
Storage:	Store the antibody undiluted at 2-8°C for one month or (in aliquots) at -20°C for longer. Avoid repeated freezing and thawing.
Stability:	Shelf life: one year from despatch.
Gene Name:	ankyrin repeat domain 40
Database Link:	<a href="#">Entrez Gene 91369 Human Q6AI12</a>
Synonyms:	Ankyrin repeat domain-containing protein 40
Note:	<b>Molecular Weight:</b> 41088 Da



[View online »](#)

**Product images:**


ANKRD40 Antibody (C-term) western blot analysis in 293, HL-60, MCF-7 cell line lysates (35ug/lane). This demonstrates the ANKRD40 antibody detected the ANKRD40 protein (arrow).



ANKRD40 Antibody (C-term) flow cytometric analysis of HL-60 cells (right histogram) compared to a negative control cell (left histogram). FITC-conjugated goat-anti-rabbit secondary antibodies were used for the analysis.