

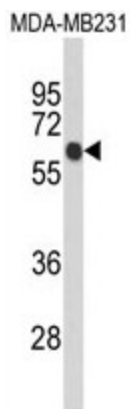
## Product datasheet for **AP50182PU-N**

### **ANKRD13C (N-term) Rabbit Polyclonal Antibody**

#### **Product data:**

Product Type:	Primary Antibodies
Applications:	WB
Recommended Dilution:	<b>ELISA:</b> 1/1000. <b>Western blotting:</b> 1/100 - 1/500.
Reactivity:	Human
Host:	Rabbit
Isotype:	Ig
Clonality:	Polyclonal
Immunogen:	KLH conjugated synthetic peptide between 1~30 amino acids from the N-terminal region of human ANKRD13C
Specificity:	This antibody reacts to ANKRD13C.
Formulation:	PBS containing 0.09% (W/V) sodium azide as preservative State: Aff - Purified State: Liquid purified Ig fraction
Concentration:	lot specific
Purification:	Affinity chromatography on Protein A
Conjugation:	Unconjugated
Storage:	Store the antibody undiluted at 2-8°C for one month or (in aliquots) at -20°C for longer. Avoid repeated freezing and thawing.
Stability:	Shelf life: one year from despatch.
Gene Name:	ankyrin repeat domain 13C
Database Link:	<a href="#">Entrez Gene 81573 Human Q8N6S4</a>
Synonyms:	Ankyrin repeat domain-containing protein 13C
Note:	<b>Molecular Weight:</b> 60818 Da

[View online »](#)

**Product images:**


Western blot analysis of ANKRD13C Antibody (N-term) in MDA-MB231 cell line lysates (35ug/lane). ANKRD13C (arrow) was detected using the purified Pab.