

## Product datasheet for **AP50179PU-N**

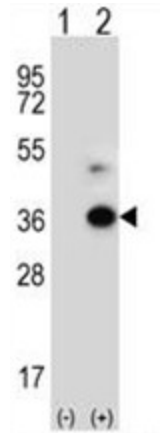
### Angiotensin like 7 (ANGPTL7) (C-term) Rabbit Polyclonal Antibody

#### Product data:

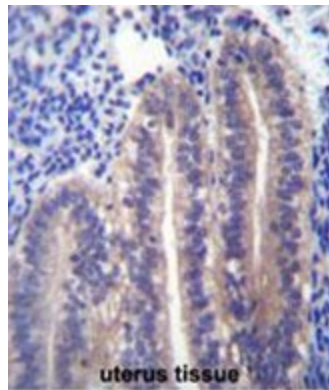
Product Type:	Primary Antibodies
Applications:	IHC, WB
Recommended Dilution:	<b>ELISA:</b> 1/1000. <b>Western blotting:</b> 1/50 - 1/100. <b>Immunohistochemistry:</b> 1/10 - 1/50.
Reactivity:	Human
Host:	Rabbit
Isotype:	Ig
Clonality:	Polyclonal
Immunogen:	KLH conjugated synthetic peptide between 315-346 amino acids from the C-terminal region of human ANGPTL7
Specificity:	This antibody reacts to ANGPTL7.
Formulation:	PBS containing 0.09% (W/V) sodium azide as preservative State: Purified State: Liquid purified Ig fraction
Concentration:	lot specific
Purification:	Saturated Ammonium Sulfate (SAS) precipitation
Conjugation:	Unconjugated
Storage:	Store the antibody undiluted at 2-8°C for one month or (in aliquots) at -20°C for longer. Avoid repeated freezing and thawing.
Stability:	Shelf life: one year from despatch.
Gene Name:	angiotensin like 7
Database Link:	<a href="#">Entrez Gene 10218 Human O43827</a>
Synonyms:	Angiotensin-related protein 7, Angiotensin-like 7, CDT6
Note:	<b>Molecular Weight:</b> 40018 Da
Protein Families:	Druggable Genome, Secreted Protein, Transmembrane



[View online »](#)

**Product images:**

Western blot analysis of ANGPTL7 (arrow) using rabbit polyclonal ANGPTL7 Antibody (C-term). 293 cell lysates (2 ug/lane) either nontransfected (Lane 1) or transiently transfected (Lane 2) with the ANGPTL7 gene.



ANGPTL7 Antibody (C-term) immunohistochemistry analysis in formalin fixed and paraffin embedded human uterus tissue followed by peroxidase conjugation of the secondary antibody and DAB staining. This data demonstrates the use of ANGPTL7 Antibody (C-term) for immunohistochemistry. Clinical relevance has not been evaluated.