

Product datasheet for **AP50166PU-N**

Salivary alpha amylase (AMY1A) (Center) Rabbit Polyclonal Antibody

Product data:

Product Type:	Primary Antibodies
Applications:	FC, IHC, WB
Recommended Dilution:	ELISA: 1/1000. Western blotting: 1/100 - 1/500. Immunohistochemistry: 1/50 - 1/100. Flow cytometric: 1/10 - 1/50.
Reactivity:	Human
Host:	Rabbit
Isotype:	Ig
Clonality:	Polyclonal
Immunogen:	KLH conjugated synthetic peptide between 202~231 amino acids from the Central region of human AMY1A
Specificity:	This antibody reacts to Alpha-amylase 1.
Formulation:	PBS containing 0.09% (W/V) sodium azide as preservative State: Aff - Purified State: Liquid purified Ig fraction
Concentration:	lot specific
Purification:	Affinity chromatography on Protein A
Conjugation:	Unconjugated
Storage:	Store the antibody undiluted at 2-8°C for one month or (in aliquots) at -20°C for longer. Avoid repeated freezing and thawing.
Stability:	Shelf life: one year from despatch.
Gene Name:	amylase, alpha 1A (salivary)
Database Link:	Entrez Gene 277 Human Entrez Gene 276 Human P04745



[View online »](#)

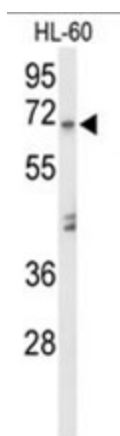
Background: Amylases are secreted proteins that hydrolyze 1,4-alpha-glucoside bonds in oligosaccharides and polysaccharides, and thus catalyze the first step in digestion of dietary starch and glycogen. The human genome has a cluster of several amylase genes that are expressed at high levels in either salivary gland or pancreas. It is an amylase isoenzyme produced by the salivary gland.

Synonyms: Salivary alpha-amylase, AMY1A

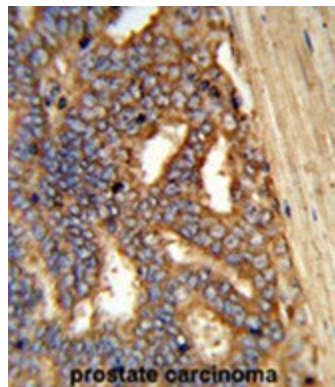
Note: **Molecular Weight:** 57768 Da

Protein Pathways: Metabolic pathways, Starch and sucrose metabolism

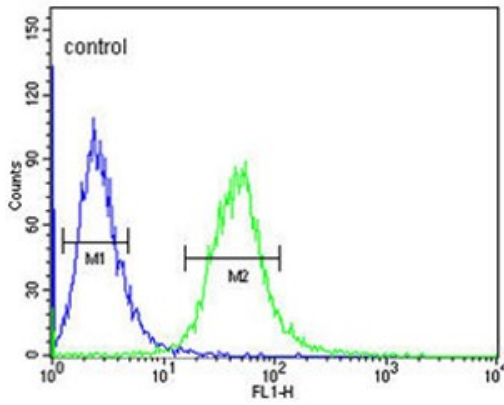
Product images:



Western blot analysis of AMY1A Antibody (Center) in HL-60 cell line lysates (35ug/lane). AMY1A (arrow) was detected using the purified Pab.



Formalin-fixed and paraffin-embedded human prostate carcinoma reacted with AMY1A Antibody (Center), which was peroxidase-conjugated to the secondary antibody, followed by DAB staining. This data demonstrates the use of this antibody for immunohistochemistry; clinical relevance has not been evaluated.

CEM

AMY1A Antibody (Center) flow cytometric analysis of CEM cells (right histogram) compared to a negative control cell (left histogram). FITC-conjugated goat-anti-rabbit secondary antibodies were used for the analysis.