

Product datasheet for **AP50165PU-N**

AMPD2 (Center) Rabbit Polyclonal Antibody

Product data:

Product Type:	Primary Antibodies
Applications:	FC, IHC, WB
Recommended Dilution:	ELISA: 1/1000. Western blotting: 1/50 - 1/100. Immunohistochemistry: 1/50 - 1/100. Flow cytometric: 1/10 - 1/50.
Reactivity:	Human
Host:	Rabbit
Isotype:	Ig
Clonality:	Polyclonal
Immunogen:	KLH conjugated synthetic peptide between 194~224 amino acids from the Center region of human AMPD2
Specificity:	This antibody reacts to AMP deaminase 2.
Formulation:	PBS containing 0.09% (W/V) sodium azide as preservative State: Purified State: Liquid purified Ig fraction
Concentration:	lot specific
Purification:	Ammonium Sulphate precipitation
Conjugation:	Unconjugated
Storage:	Store the antibody undiluted at 2-8°C for one month or (in aliquots) at -20°C for longer. Avoid repeated freezing and thawing.
Stability:	Shelf life: one year from despatch.
Gene Name:	adenosine monophosphate deaminase 2
Database Link:	Entrez Gene 271 Human Q01433
Background:	AMP deaminase plays a critical role in energy metabolism.
Synonyms:	OTTHUMP00000013371



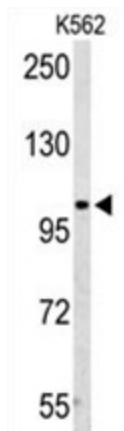
[View online »](#)

Note: **Molecular Weight:** 100688 Da

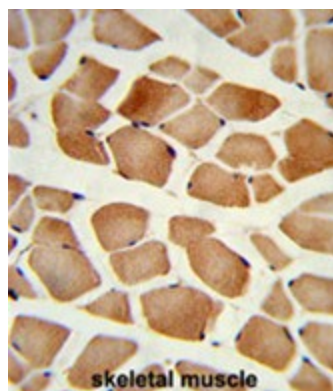
Protein Families: Druggable Genome

Protein Pathways: Metabolic pathways, Purine metabolism

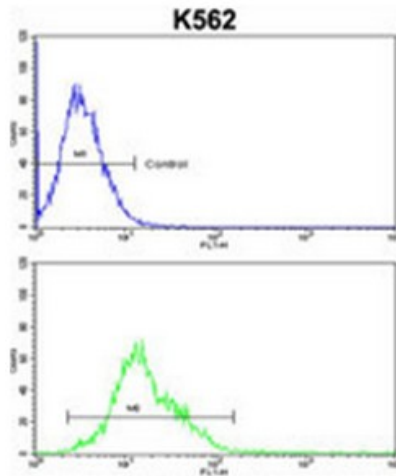
Product images:



Western blot analysis of AMPD2 Antibody (Center) in K562 cell line lysates (35ug/lane). AMPD2 (arrow) was detected using the purified Pab.



Formalin-fixed and paraffin-embedded human skeletal muscle reacted with AMPD2 Antibody (Center), which was peroxidase-conjugated to the secondary antibody, followed by DAB staining. This data demonstrates the use of this antibody for immunohistochemistry; clinical relevance has not been evaluated.



AMPD2 Antibody (Center) flow cytometric analysis of k562 cells (bottom histogram) compared to a negative control cell (top histogram). FITC-conjugated goat-anti-rabbit secondary antibodies were used for the analysis.