

## Product datasheet for **AP50163PU-N**

### AMN1 (N-term) Rabbit Polyclonal Antibody

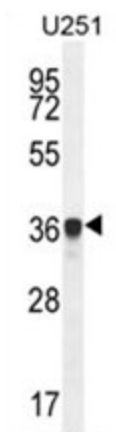
#### Product data:

Product Type:	Primary Antibodies
Applications:	WB
Recommended Dilution:	<b>ELISA:</b> 1/1000. <b>Western blotting:</b> 1/100 - 1/500.
Reactivity:	Human
Host:	Rabbit
Isotype:	Ig
Clonality:	Polyclonal
Immunogen:	KLH conjugated synthetic peptide between 16-46 amino acids from the N-terminal region of human AMN1
Specificity:	This antibody reacts to AMN1.
Formulation:	PBS containing 0.09% (W/V) sodium azide as preservative State: Aff - Purified State: Liquid purified Ig fraction
Concentration:	lot specific
Purification:	Affinity chromatography on Protein A
Conjugation:	Unconjugated
Storage:	Store the antibody undiluted at 2-8°C for one month or (in aliquots) at -20°C for longer. Avoid repeated freezing and thawing.
Stability:	Shelf life: one year from despatch.
Gene Name:	antagonist of mitotic exit network 1 homolog
Database Link:	<a href="#">Entrez Gene 196394 Human Q8IY45</a>
Background:	AMN1 belongs to the AMN1 family. The exact function of AMN1 remains unknown.
Synonyms:	AMN1
Note:	<b>Molecular Weight:</b> 28408 Da



[View online »](#)

## Product images:



AMN1 Antibody (N-term) western blot analysis in U251 cell line lysates (35ug/lane). This demonstrates the AMN1 antibody detected the AMN1 protein (arrow).