

Product datasheet for **AP50161PU-N**

AMH (Center) Rabbit Polyclonal Antibody

Product data:

Product Type:	Primary Antibodies
Applications:	FC, IHC, WB
Recommended Dilution:	Western blotting: 1/1000. Immunohistochemistry: 1/10 - 1/50. Flow Cytometry: 1/10 - 1/50.
Reactivity:	Human, Mouse
Host:	Rabbit
Isotype:	Ig
Clonality:	Polyclonal
Immunogen:	KLH conjugated synthetic peptide between 424-451 amino acids from the Central region of human AMH
Specificity:	This antibody reacts to Anti-Muellerian Hormone.
Formulation:	PBS containing 0.09% (W/V) sodium azide as preservative State: Aff - Purified State: Liquid purified Ig fraction
Concentration:	lot specific
Purification:	Affinity chromatography on Protein A
Conjugation:	Unconjugated
Storage:	Store the antibody undiluted at 2-8°C for one month or (in aliquots) at -20°C for longer. Avoid repeated freezing and thawing.
Stability:	Shelf life: one year from despatch.
Gene Name:	anti-Mullerian hormone
Database Link:	Entrez Gene 11705 Mouse Entrez Gene 268 Human P03971



[View online »](#)

Background: Anti mullerian hormone (AMH) is a member of the TGF beta superfamily. It is secreted as a homodimeric 140kD disulphide linked precursor that is cleaved to release the mature 30kD homodimer. Originally classified as a foetal testicular hormone that inhibits Mullerian duct development, AMH is expressed post natally by immature Sertoli cells, and to a lesser degree by granulosa cells. AMH plays a role in testicular differentiation and in the regulation of ovarian follicle growth.

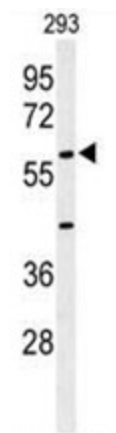
Synonyms: Muellerian-inhibiting factor, MIF, MIS

Note: **Molecular Weight:** 59221 Da

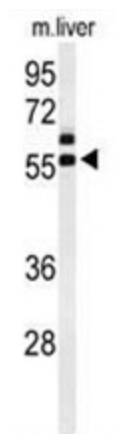
Protein Families: Druggable Genome, Secreted Protein

Protein Pathways: Cytokine-cytokine receptor interaction, TGF-beta signaling pathway

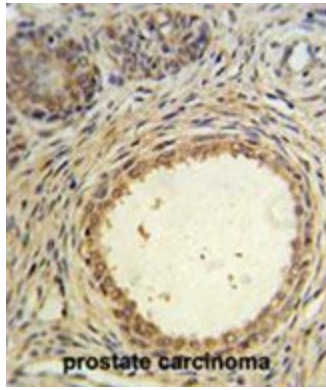
Product images:



Western blot analysis of AMH Antibody (Center) in 293 cell line lysates (35ug/lane). AMH (arrow) was detected using the purified Pab.

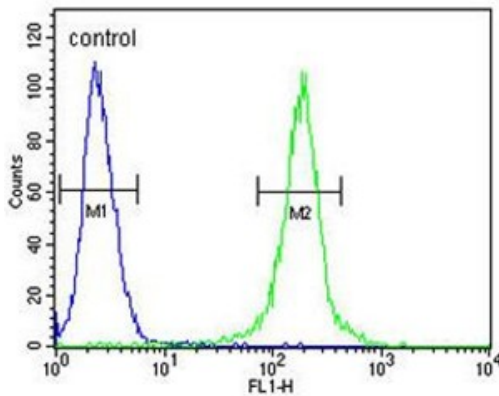


Western blot analysis of AMH Antibody (Center) in mouse liver tissue lysates (35 ug/lane). AMH (arrow) was detected using the purified Pab.



AMH Antibody (Center) IHC analysis in formalin fixed and paraffin embedded prostate carcinoma followed by peroxidase conjugation of the secondary antibody and DAB staining. This data demonstrates the use of the AMH Antibody (Center) for immunohistochemistry. Clinical relevance has not been evaluated.

293



AMH Antibody (Center) flow cytometric analysis of 293 cells (right histogram) compared to a negative control cell (left histogram). FITC-conjugated goat-anti-rabbit secondary antibodies were used for the analysis.