

## Product datasheet for **AP50160PU-N**

### AMFR (Center) Rabbit Polyclonal Antibody

#### Product data:

Product Type:	Primary Antibodies
Applications:	WB
Recommended Dilution:	<b>ELISA:</b> 1/1000. <b>Western blotting:</b> 1/100 - 1/500.
Reactivity:	Human
Host:	Rabbit
Isotype:	Ig
Clonality:	Polyclonal
Immunogen:	KLH conjugated synthetic peptide between 370-400 amino acids from the Central region of human AMFR
Specificity:	This antibody reacts to AMFR.
Formulation:	PBS containing 0.09% (W/V) sodium azide as preservative State: Aff - Purified State: Liquid purified Ig fraction
Concentration:	lot specific
Purification:	Affinity chromatography on Protein A
Conjugation:	Unconjugated
Storage:	Store the antibody undiluted at 2-8°C for one month or (in aliquots) at -20°C for longer. Avoid repeated freezing and thawing.
Stability:	Shelf life: one year from despatch.
Gene Name:	autocrine motility factor receptor
Database Link:	<a href="#">Entrez Gene 267 Human Q9UKV5</a>
Background:	Autocrine motility factor is a tumor motility-stimulating protein secreted by tumor cells. The protein encoded by this gene is a glycosylated transmembrane protein and a receptor for autocrine motility factor. The receptor, which shows some sequence similarity to tumor protein p53, is localized to the leading and trailing edges of carcinoma cells.
Synonyms:	AMF receptor isoform 2, gp78, RING finger protein 45

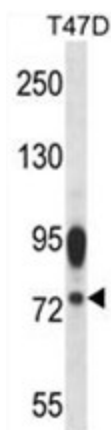


[View online »](#)

Note: **Molecular Weight:** 72996 Da

Protein Families: Druggable Genome, Transmembrane

**Product images:**



AMFR Antibody (Center) western blot analysis in T47D cell line lysates (35 ug/lane). This demonstrates the AMFR antibody detected the AMFR protein (arrow)