

## Product datasheet for **AP50157PU-N**

### AMAC1L2 (SLC35G5) (N-term) Rabbit Polyclonal Antibody

#### Product data:

Product Type:	Primary Antibodies
Applications:	FC, WB
Recommended Dilution:	<b>ELISA:</b> 1/1000. <b>Western blotting:</b> 1/100 - 1/500. <b>Flow Cytometry:</b> 1/10 - 1/50.
Reactivity:	Human
Host:	Rabbit
Isotype:	Ig
Clonality:	Polyclonal
Immunogen:	KLH conjugated synthetic peptide between 1-30 amino acids from the N-terminal region of human AMAC1L2
Specificity:	This antibody reacts to AMAC1L2.
Formulation:	PBS containing 0.09% (W/V) sodium azide as preservative State: Aff - Purified State: Liquid purified Ig fraction
Concentration:	lot specific
Purification:	Affinity chromatography on Protein A
Conjugation:	Unconjugated
Storage:	Store the antibody undiluted at 2-8°C for one month or (in aliquots) at -20°C for longer. Avoid repeated freezing and thawing.
Stability:	Shelf life: one year from despatch.
Gene Name:	solute carrier family 35 member G5
Database Link:	<a href="#">Entrez Gene 83650 Human Q96KT7</a>
Background:	This gene seems to be intronless. It has high sequence similarity to the gene encoding acyl-malonyl condensing enzyme on chromosome 17.
Synonyms:	Solute carrier family 35 member G5, AMAC, AMAC1L2

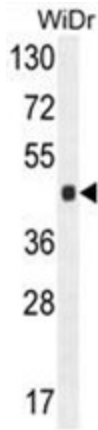


[View online »](#)

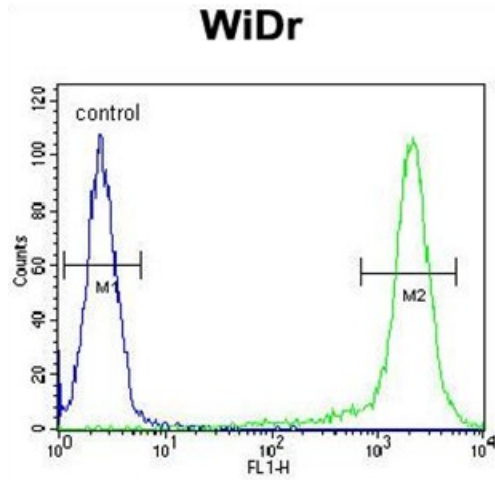
**Note:** **Molecular Weight:** 35161 Da

**Protein Families:** Transmembrane

**Product images:**



AMAC1L2 Antibody (N-term) western blot analysis in WiDr cell line lysates (35ug/lane). This demonstrates the AMAC1L2 antibody detected the AMAC1L2 protein (arrow).



AMAC1L2 Antibody (N-term) flow cytometric analysis of WiDr cells (right histogram) compared to a negative control cell (left histogram). FITC-conjugated goat-anti-rabbit secondary antibodies were used for the analysis.