

## Product datasheet for **AP50155PU-N**

### Alkaline Phosphatase (ALPP) (N-term) Rabbit Polyclonal Antibody

#### Product data:

Product Type:	Primary Antibodies
Applications:	WB
Recommended Dilution:	<b>ELISA:</b> 1/1000. <b>Western blotting:</b> 1/100 - 1/500.
Reactivity:	Human
Host:	Rabbit
Isotype:	Ig
Clonality:	Polyclonal
Immunogen:	KLH conjugated synthetic peptide between 55-83 amino acids from the N-terminal region of human ALPP
Specificity:	This antibody reacts to Alkaline phosphatase.
Formulation:	PBS containing 0.09% (W/V) sodium azide as preservative State: Aff - Purified State: Liquid purified Ig fraction
Concentration:	lot specific
Purification:	Affinity chromatography on Protein A
Conjugation:	Unconjugated
Storage:	Store the antibody undiluted at 2-8°C for one month or (in aliquots) at -20°C for longer. Avoid repeated freezing and thawing.
Stability:	Shelf life: one year from despatch.
Gene Name:	alkaline phosphatase, placental
Database Link:	<a href="#">Entrez Gene 250 Human P05187</a>



[View online »](#)

**Background:**

There are at least four distinct but related alkaline phosphatases: intestinal, placental, placental-like, and liver/bone/kidney (tissue non-specific). The first three are located together on chromosome 2 while the tissue non-specific form is located on chromosome 1. The product of this gene is a membrane bound glycosylated enzyme, also referred to as the heat stable form, that is expressed primarily in the placenta although it is closely related to the intestinal form of the enzyme as well as to the placental-like form. The coding sequence for this form of alkaline phosphatase is unique in that the 3' untranslated region contains multiple copies of an Alu family repeat. In addition, this gene is polymorphic and three common alleles (type 1, type 2 and type 3) for this form of alkaline phosphatase have been well characterized.

**Synonyms:**

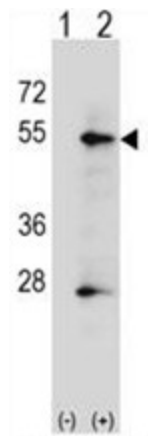
PLAP-1, Alkaline phosphatase Regan isozyme

**Note:**

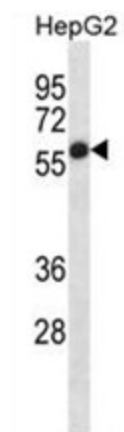
**Molecular Weight:** 57954 Da

**Protein Pathways:**

Folate biosynthesis, Metabolic pathways

**Product images:**


Western blot analysis of ALPP (arrow) using rabbit polyclonal ALPP Antibody (N-term). 293 cell lysates (2 ug/lane) either nontransfected (Lane 1) or transiently transfected (Lane 2) with the ALPP gene.



ALPP Antibody (N-term) western blot analysis in HepG2 cell line lysates (35ug/lane). This demonstrates the ALPP antibody detected the ALPP protein (arrow).