

Product datasheet for **AP50154PU-N**

ALOXE3 (Center) Rabbit Polyclonal Antibody

Product data:

Product Type:	Primary Antibodies
Applications:	WB
Recommended Dilution:	ELISA: 1/1000. Western blotting: 1/100 - 1/500.
Reactivity:	Human, Mouse
Host:	Rabbit
Isotype:	Ig
Clonality:	Polyclonal
Immunogen:	KLH conjugated synthetic peptide between 230-260 amino acids from the Central region of human ALOXE3
Specificity:	This antibody reacts to ALOXE3.
Formulation:	PBS containing 0.09% (W/V) sodium azide as preservative State: Aff - Purified State: Liquid purified Ig fraction
Concentration:	lot specific
Purification:	Affinity chromatography on Protein A
Conjugation:	Unconjugated
Storage:	Store the antibody undiluted at 2-8°C for one month or (in aliquots) at -20°C for longer. Avoid repeated freezing and thawing.
Stability:	Shelf life: one year from despatch.
Gene Name:	arachidonate lipoxygenase 3
Database Link:	Entrez Gene 23801 Mouse Entrez Gene 59344 Human Q9BYJ1



[View online »](#)

Background:

ALOXE3 is a member of the lipoxygenase family, which are catabolized by arachidonic acid-derived compounds. The encoded enzyme is a hydroperoxide isomerase that synthesizes a unique type of epoxy alcohol (8R-hydroxy-11R,12R-epoxyeicosa-5Z,9E,14Z-trienoic acid) from 12R-hydroperoxyeicosatetraenoic acid (12R-HPETE). This epoxy alcohol can activate the nuclear receptor peroxisome proliferator-activated receptor alpha (PPARalpha), which is implicated in epidermal differentiation. Loss of function of the enzyme encoded by this gene results in ichthyosis, implicating the function of this gene in the differentiation of human skin.

Synonyms:

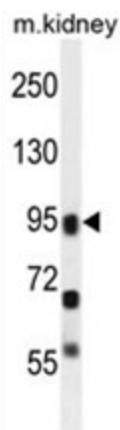
e-LOX-3, eLOX3, Epidermis-type lipoxygenase 3

Note:

Molecular Weight: 80543 Da

Protein Families:

Druggable Genome

Product images:

ALOXE3 Antibody (Center) western blot analysis in mouse kidney tissue lysates (35ug/lane). This demonstrates the ALOXE3 antibody detected the ALOXE3 protein (arrow).