

## Product datasheet for **AP50151PU-N**

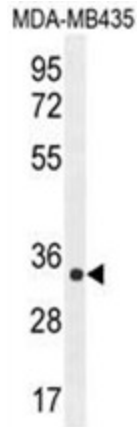
### ALKBH6 (Center) Rabbit Polyclonal Antibody

#### Product data:

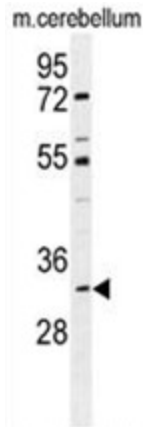
Product Type:	Primary Antibodies
Applications:	FC, IHC, WB
Recommended Dilution:	<b>ELISA:</b> 1/1000. <b>Western blotting:</b> 1/100 - 1/500. <b>Immunohistochemistry:</b> 1/50 - 1/100. <b>Flow Cytometry:</b> 1/10 - 1/50.
Reactivity:	Human, Mouse
Host:	Rabbit
Isotype:	Ig
Clonality:	Polyclonal
Immunogen:	KLH conjugated synthetic peptide between 123-153 amino acids from the Central region of human ALKBH
Specificity:	This antibody reacts to ALKBH6.
Formulation:	PBS containing 0.09% (W/V) sodium azide as preservative State: Aff - Purified State: Liquid purified Ig fraction
Concentration:	lot specific
Purification:	Affinity chromatography on Protein A
Conjugation:	Unconjugated
Storage:	Store the antibody undiluted at 2-8°C for one month or (in aliquots) at -20°C for longer. Avoid repeated freezing and thawing.
Stability:	Shelf life: one year from despatch.
Gene Name:	alkB homolog 6
Database Link:	<a href="#">Entrez Gene 84964 Human Q3KRA9</a>
Synonyms:	Probable alpha-ketoglutarate-dependent dioxygenase ABH6,ABH6
Note:	<b>Molecular Weight:</b> 26483 Da



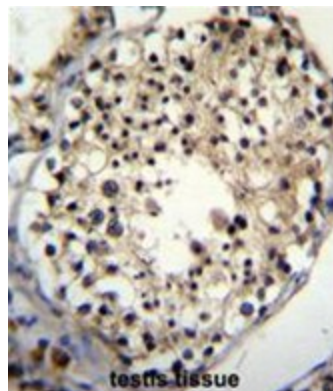
[View online »](#)

**Product images:**


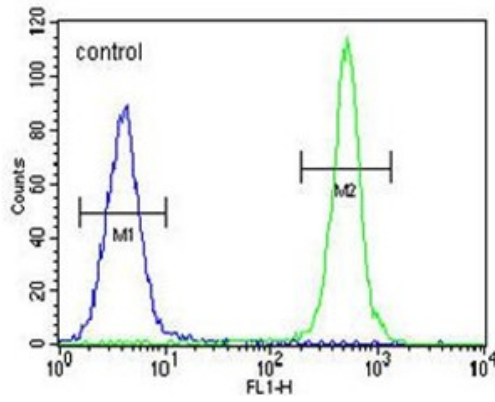
ALKBH6 Antibody (Center) western blot analysis in MDA-MB435 cell line lysates (35 ug/lane). This demonstrates the ALKBH6 antibody detected the ALKBH6 protein (arrow).



ALKBH6 Antibody (Center) western blot analysis in mouse cerebellum tissue lysates (35ug/lane). This demonstrates the ALKBH6 antibody detected the ALKBH6 protein (arrow).



ALKBH6 Antibody (Center) immunohistochemistry analysis in formalin fixed and paraffin embedded human testis tissue followed by peroxidase conjugation of the secondary antibody and DAB staining. This data demonstrates the use of ALKBH6 Antibody (Center) for immunohistochemistry. Clinical relevance has not been evaluated.

**MDA-MB435**

ALKBH6 Antibody (Center) flow cytometric analysis of MDA-MB435 cells (right histogram) compared to a negative control cell (left histogram). FITC-conjugated goat-anti-rabbit secondary antibodies were used for the analysis.