

Product datasheet for **AP50150PU-N**

ALKBH4 (Center) Rabbit Polyclonal Antibody

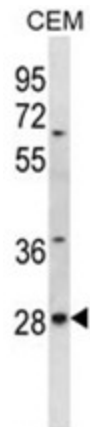
Product data:

Product Type:	Primary Antibodies
Applications:	WB
Recommended Dilution:	ELISA: 1/1000. Western blotting: 1/100 - 1/500.
Reactivity:	Human, Mouse
Host:	Rabbit
Isotype:	Ig
Clonality:	Polyclonal
Immunogen:	KLH conjugated synthetic peptide between 95-125 amino acids from the Central region of human ALKBH4
Specificity:	This antibody reacts to ALKBH4.
Formulation:	PBS containing 0.09% (W/V) sodium azide as preservative State: Aff - Purified State: Liquid purified Ig fraction
Concentration:	lot specific
Purification:	Affinity chromatography on Protein A
Conjugation:	Unconjugated
Storage:	Store the antibody undiluted at 2-8°C for one month or (in aliquots) at -20°C for longer. Avoid repeated freezing and thawing.
Stability:	Shelf life: one year from despatch.
Gene Name:	alkB homolog 4, lysine demethylase
Database Link:	Entrez Gene 54784 Human Q9NXW9
Synonyms:	Probable alpha-ketoglutarate-dependent dioxygenase ABH4,ABH4
Note:	Molecular Weight: 33838 Da

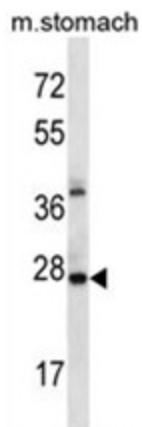


[View online »](#)

Product images:



ALKBH4 Antibody (Center) western blot analysis in CEM cell line lysates (35ug/lane). This demonstrates the ALKBH4 antibody detected the ALKBH4 protein (arrow).



ALKBH4 Antibody (Center) western blot analysis in mouse stomach tissue lysates (35ug/lane). This demonstrates the ALKBH4 antibody detected the ALKBH4 protein (arrow).