

## Product datasheet for **AP50143PU-N**

### Aldolase C (ALDOC) (N-term) Rabbit Polyclonal Antibody

#### Product data:

Product Type:	Primary Antibodies
Applications:	WB
Recommended Dilution:	<b>ELISA:</b> 1/1000. <b>Western blotting:</b> 1/50 - 1/100.
Reactivity:	Human, Mouse
Host:	Rabbit
Isotype:	Ig
Clonality:	Polyclonal
Immunogen:	KLH conjugated synthetic peptide between 79-108 amino acids from the N-terminal region of human ALDOC.
Specificity:	This antibody reacts to Aldolase C.
Formulation:	PBS containing 0.09% (W/V) sodium azide as preservative State: Purified State: Liquid purified Ig fraction
Concentration:	lot specific
Purification:	Saturated Ammonium Sulfate (SAS) precipitation
Conjugation:	Unconjugated
Storage:	Store the antibody undiluted at 2-8°C for one month or (in aliquots) at -20°C for longer. Avoid repeated freezing and thawing.
Stability:	Shelf life: one year from despatch.
Gene Name:	aldolase, fructose-bisphosphate C
Database Link:	<a href="#">Entrez Gene 11676 Mouse</a> <a href="#">Entrez Gene 230 Human</a> <a href="#">P09972</a>
Background:	This gene encodes a member of the class I fructose-biphosphate aldolase gene family. Expressed specifically in the hippocampus and Purkinje cells of the brain, the encoded protein is a glycolytic enzyme that catalyzes the reversible aldol cleavage of fructose-1,6-biphosphate and fructose 1-phosphate to dihydroxyacetone phosphate and either glyceraldehyde-3-phosphate or glyceraldehyde, respectively.



[View online »](#)

**Synonyms:** ALDC, Brain-type aldolase

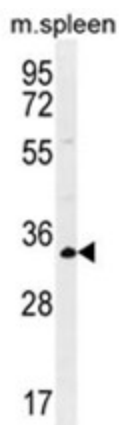
**Note:** **Molecular Weight:** 39456 Da

**Protein Pathways:** Fructose and mannose metabolism, Glycolysis / Gluconeogenesis, Metabolic pathways, Pentose phosphate pathway

### Product images:



ALDOC Antibody (N-term) western blot analysis in WiDr cell line lysates (35 ug/lane). This demonstrates the ALDOC antibody detected the ALDOC protein (arrow).



ALDOC Antibody (N-term) western blot analysis in mouse spleen tissue lysates (35 ug/lane). This demonstrates the ALDOC antibody detected the ALDOC protein (arrow).