

## Product datasheet for **AP50142PU-N**

### **ALDH3B2 (C-term) Rabbit Polyclonal Antibody**

#### **Product data:**

Product Type:	Primary Antibodies
Applications:	IHC, WB
Recommended Dilution:	<b>ELISA:</b> 1/1000. <b>Western blotting:</b> 1/100 - 1/500. <b>Immunohistochemistry:</b> 1/10 - 1/50.
Reactivity:	Human
Host:	Rabbit
Isotype:	Ig
Clonality:	Polyclonal
Immunogen:	KLH conjugated synthetic peptide between 259-288 amino acids from the C-terminal region of human ALDH3B2.
Specificity:	This antibody reacts to ALDH3B2.
Formulation:	PBS containing 0.09% (W/V) sodium azide as preservative State: Aff - Purified State: Liquid purified Ig fraction
Concentration:	lot specific
Purification:	Affinity chromatography on Protein A
Conjugation:	Unconjugated
Storage:	Store the antibody undiluted at 2-8°C for one month or (in aliquots) at -20°C for longer. Avoid repeated freezing and thawing.
Stability:	Shelf life: one year from despatch.
Gene Name:	aldehyde dehydrogenase 3 family member B2
Database Link:	<a href="#">Entrez Gene 222 Human</a> <a href="#">P48448</a>



[View online »](#)

**Background:**

This gene encodes a member of the aldehyde dehydrogenase family, a group of isozymes that may play a major role in the detoxification of aldehydes generated by alcohol metabolism and lipid peroxidation. The gene of this particular family member is over 10 kb in length. The expression of these transcripts is restricted to the salivary gland among the human tissues examined. Alternate transcriptional splice variants have been characterized.

**Synonyms:**

Aldehyde dehydrogenase 8

**Note:**

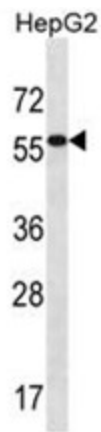
**Molecular Weight:** 42635 Da

**Protein Families:**

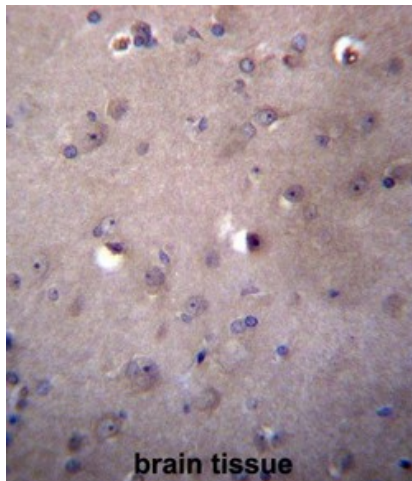
Druggable Genome

**Protein Pathways:**

Drug metabolism - cytochrome P450, Glycolysis / Gluconeogenesis, Histidine metabolism, Metabolic pathways, Metabolism of xenobiotics by cytochrome P450, Phenylalanine metabolism, Tyrosine metabolism

**Product images:**

ALDH3B2 Antibody (C-term) western blot analysis in HepG2 cell line lysates (35 ug/lane). This demonstrates the ALDH3B2 antibody detected the ALDH3B2 protein (arrow).



ALDH3B2 Antibody (C-term) immunohistochemistry analysis in formalin fixed and paraffin embedded human brain tissue followed by peroxidase conjugation of the secondary antibody and DAB staining. This data demonstrates the use of ALDH3B2 Antibody (C-term) for immunohistochemistry. Clinical relevance has not been evaluated.