

## Product datasheet for **AP50141PU-N**

### ALDH1L2 (C-term) Rabbit Polyclonal Antibody

#### Product data:

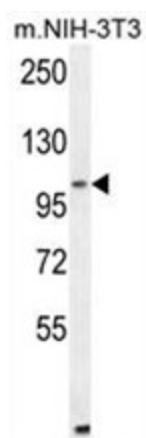
Product Type:	Primary Antibodies
Applications:	IHC, WB
Recommended Dilution:	<b>ELISA:</b> 1/1000. <b>Western blotting:</b> 1/100 - 1/500. <b>Immunohistochemistry:</b> 1/50 - 1/100.
Reactivity:	Human, Mouse
Host:	Rabbit
Isotype:	Ig
Clonality:	Polyclonal
Immunogen:	KLH conjugated synthetic peptide between 750-780 amino acids from the C-terminal region of human ALDH1L2
Specificity:	This antibody reacts to ALDH1L2.
Formulation:	PBS containing 0.09% (W/V) sodium azide as preservative State: Aff - Purified State: Liquid purified Ig fraction
Concentration:	lot specific
Purification:	Affinity chromatography on Protein A
Conjugation:	Unconjugated
Storage:	Store the antibody undiluted at 2-8°C for one month or (in aliquots) at -20°C for longer. Avoid repeated freezing and thawing.
Stability:	Shelf life: one year from despatch.
Gene Name:	aldehyde dehydrogenase 1 family member L2
Database Link:	<a href="#">Entrez Gene 160428 Human Q3SY69</a>
Synonyms:	DKFZp686A16126; DKFZp686M064; DKFZp686P14145; FLJ36769; FLJ38508; MGC119536; MGC119537
Note:	<b>Molecular Weight:</b> 101746 Da



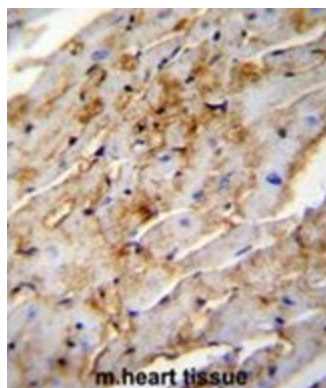
[View online »](#)

Protein Families: Druggable Genome

### Product images:



ALDH1L2 Antibody (C-term) western blot analysis in mouse NIH-3T3 cell line lysates (35 ug/lane). This demonstrates the ALDH1L2 antibody detected the ALDH1L2 protein (arrow).



ALDH1L2 Antibody (C-term) immunohistochemistry analysis in formalin fixed and paraffin embedded mouse heart tissue followed by peroxidase conjugation of the secondary antibody and DAB staining. This data demonstrates the use of ALDH1L2 Antibody (C-term) for immunohistochemistry. Clinical relevance has not been evaluated.