

Product datasheet for **AP50138PU-N**

C2CD6 (N-term) Rabbit Polyclonal Antibody

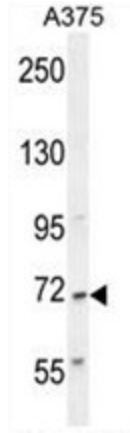
Product data:

Product Type:	Primary Antibodies
Applications:	FC, WB
Recommended Dilution:	ELISA: 1/1000. Western blotting: 1/100 - 1/500. Flow Cytometry: 1/10 - 1/50.
Reactivity:	Human
Host:	Rabbit
Isotype:	Ig
Clonality:	Polyclonal
Immunogen:	KLH conjugated synthetic peptide between 155-185 amino acids from the N-terminal region of human AL2SA
Specificity:	This antibody reacts to ALS2CR11.
Formulation:	PBS containing 0.09% (W/V) sodium azide as preservative State: Aff - Purified State: Liquid purified Ig fraction
Concentration:	lot specific
Purification:	Affinity chromatography on Protein A
Conjugation:	Unconjugated
Storage:	Store the antibody undiluted at 2-8°C for one month or (in aliquots) at -20°C for longer. Avoid repeated freezing and thawing.
Stability:	Shelf life: one year from despatch.
Gene Name:	amyotrophic lateral sclerosis 2 chromosome region candidate 11
Database Link:	Entrez Gene 151254 Human Q53TS8
Synonyms:	DKFZp686H0636; FLJ25351; FLJ40332
Note:	Molecular Weight: 71159 Da

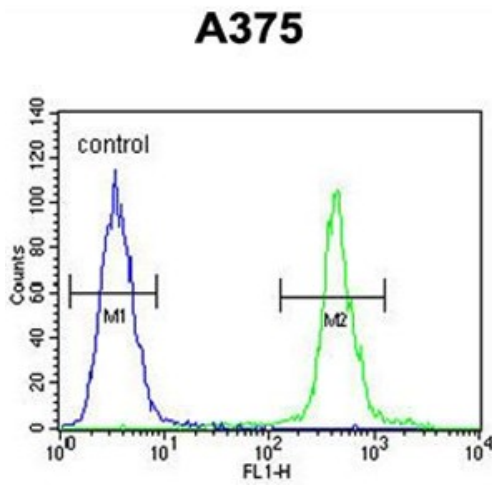


[View online »](#)

Product images:



AL2SA Antibody (N-term) western blot analysis in A375 cell line lysates (35 ug/lane). This demonstrates the AL2SA antibody detected the AL2SA protein (arrow).



AL2SA Antibody (N-term) flow cytometric analysis of A375 cells (right histogram) compared to a negative control cell (left histogram). FITC-conjugated goat-anti-rabbit secondary antibodies were used for the analysis.