

## Product datasheet for **AP50126PU-N**

### AIM2 (N-term) Rabbit Polyclonal Antibody

#### Product data:

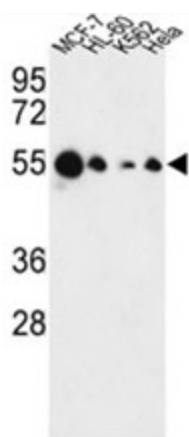
Product Type:	Primary Antibodies
Applications:	FC, WB
Recommended Dilution:	<b>ELISA:</b> 1/1000. <b>Western blotting:</b> 1/100 - 1/500. <b>Flow cytometry:</b> 1/10 - 1/50.
Reactivity:	Human
Host:	Rabbit
Isotype:	Ig
Clonality:	Polyclonal
Immunogen:	KLH conjugated synthetic peptide between 11~40 amino acids from the N-terminal region of human AIM2
Specificity:	This antibody reacts to AIM2.
Formulation:	PBS containing 0.09% (W/V) sodium azide as preservative State: Aff - Purified State: Liquid purified Ig fraction
Concentration:	lot specific
Purification:	Affinity chromatography on Protein A
Conjugation:	Unconjugated
Storage:	Store the antibody undiluted at 2-8°C for one month or (in aliquots) at -20°C for longer. Avoid repeated freezing and thawing.
Stability:	Shelf life: one year from despatch.
Gene Name:	absent in melanoma 2
Database Link:	<a href="#">Entrez Gene 9447 Human O14862</a>
Background:	AIM2 is a member of the IFI20X /IFI16 family. It plays a putative role in tumorigenic reversion and may control cell proliferation. Interferon-gamma induces expression of AIM2.
Synonyms:	PYHIN4



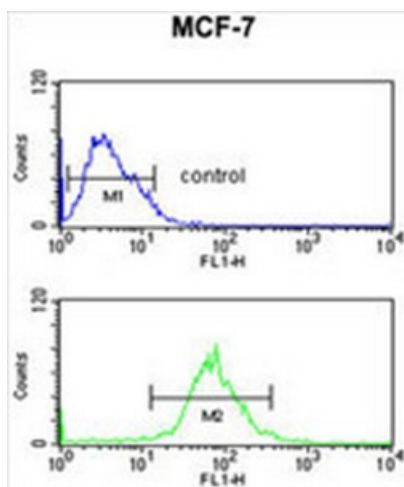
[View online »](#)

**Note:** **Molecular Weight:** 38954 Da  
**Protein Pathways:** Cytosolic DNA-sensing pathway

**Product images:**



Western blot analysis of AIM2 Antibody (N-term) in MCF-7, HL-60, K562, HeLa cell line lysates (35 ug/lane). AIM2 (arrow) was detected using the purified Pab.



AIM2 Antibody (N-term) flow cytometric analysis of MCF-7 cells (bottom histogram) compared to a negative control cell (top histogram). FITC-conjugated goat-anti-rabbit secondary antibodies were used for the analysis.