

Product datasheet for **AP50125PU-N**

CRYBG2 (C-term) Rabbit Polyclonal Antibody

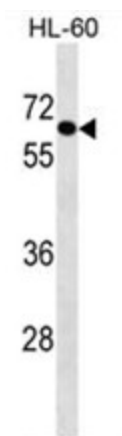
Product data:

Product Type:	Primary Antibodies
Applications:	WB
Recommended Dilution:	ELISA: 1/1000. Western blotting: 1/100 - 17500.
Reactivity:	Human
Host:	Rabbit
Isotype:	Ig
Clonality:	Polyclonal
Immunogen:	KLH conjugated synthetic peptide between 394-423 amino acids from the C-terminal region of human AIM1L
Specificity:	This antibody reacts to AIM1L.
Formulation:	PBS containing 0.09% (W/V) sodium azide as preservative State: Aff - Purified State: Liquid purified Ig fraction
Concentration:	lot specific
Purification:	Affinity chromatography on Protein A
Conjugation:	Unconjugated
Gene Name:	absent in melanoma 1-like
Database Link:	Entrez Gene 55057 Human Q8N1P7
Synonyms:	Absent in melanoma 1-like protein,CRYBG2
Note:	Molecular Weight: 68646 Da



[View online »](#)

Product images:



AIM1L Antibody (C-term) western blot analysis in HL-60 cell line lysates (35ug/lane). This demonstrates the AIM1L antibody detected the AIM1L protein (arrow)