

Product datasheet for **AP50122PU-N**

Iba1 (AIF1) (N-term) Rabbit Polyclonal Antibody

Product data:

Product Type:	Primary Antibodies
Applications:	IHC, WB
Recommended Dilution:	ELISA: 1/1000. Western blotting: 1/100 - 1/500. Immunohistochemistry: 1/50 - 1/100.
Reactivity:	Human, Mouse
Host:	Rabbit
Isotype:	Ig
Clonality:	Polyclonal
Immunogen:	KLH conjugated synthetic peptide between 13-44 amino acids from the N-terminal region of human AIF1
Specificity:	This antibody reacts to AIF1.
Formulation:	PBS containing 0.09% (W/V) sodium azide as preservative State: Aff - Purified State: Liquid purified Ig fraction
Concentration:	lot specific
Purification:	Affinity chromatography on Protein A
Conjugation:	Unconjugated
Storage:	Store the antibody undiluted at 2-8°C for one month or (in aliquots) at -20°C for longer. Avoid repeated freezing and thawing.
Stability:	Shelf life: one year from despatch.
Gene Name:	allograft inflammatory factor 1
Database Link:	Entrez Gene 11629 Mouse Entrez Gene 199 Human P55008
Background:	AIF1 is thought to be involved in negative regulation of growth of vascular smooth muscle cells, which contributes to the anti-inflammatory response to vessel wall trauma.
Synonyms:	AIF-1, Protein G1, IBA1, Allograft inflammatory factor 1

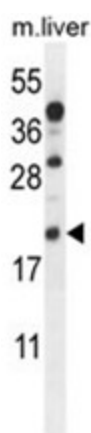


[View online »](#)

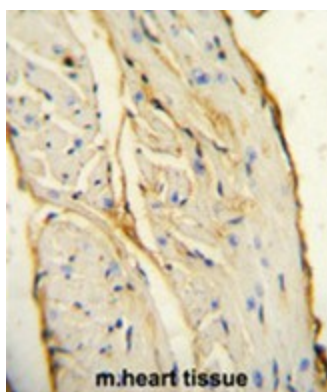
Note: **Molecular Weight:** 16703 Da

Protein Families: Druggable Genome

Product images:



AIF1 Antibody (N-term) western blot analysis in mouse liver tissue lysates (35 ug/lane). This demonstrates the AIF1 antibody detected the AIF1 protein (arrow).



AIF1 antibody (N-term) immunohistochemistry analysis in formalin fixed and paraffin embedded mouse heart tissue followed by peroxidase conjugation of the secondary antibody and DAB staining. This data demonstrates the use of the AIF1 antibody (N-term) for immunohistochemistry. Clinical relevance has not been evaluated.