

## Product datasheet for **AP50116PU-N**

### AGXT2 (C-term) Rabbit Polyclonal Antibody

#### Product data:

Product Type:	Primary Antibodies
Applications:	FC, WB
Recommended Dilution:	<b>ELISA:</b> 1/1000. <b>Western blotting:</b> 1/100 - 1/500. <b>Flow Cytometry:</b> 1/10 - 1/50.
Reactivity:	Human
Host:	Rabbit
Isotype:	Ig
Clonality:	Polyclonal
Immunogen:	KLH conjugated synthetic peptide between 443~473 amino acids from the C-terminal region of human AGXT2
Specificity:	This antibody reacts to AGXT2.
Formulation:	PBS containing 0.09% (W/V) sodium azide as preservative State: Aff - Purified State: Liquid purified Ig fraction
Concentration:	lot specific
Purification:	Affinity chromatography on Protein A
Conjugation:	Unconjugated
Storage:	Store the antibody undiluted at 2-8°C for one month or (in aliquots) at -20°C for longer. Avoid repeated freezing and thawing.
Stability:	Shelf life: one year from despatch.
Gene Name:	alanine--glyoxylate aminotransferase 2
Database Link:	<a href="#">Entrez Gene 64902 Human Q9BYV1</a>
Background:	The protein encoded by this gene is a class III pyridoxal-phosphate-dependent mitochondrial aminotransferase. It catalyzes the conversion of glyoxylate to glycine using L-alanine as the amino donor.
Synonyms:	Beta-ALAAT II, D-AIBAT



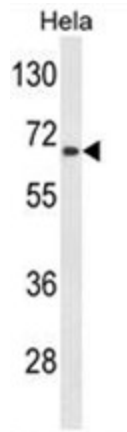
[View online »](#)

**Note:** **Molecular Weight:** 57156 Da

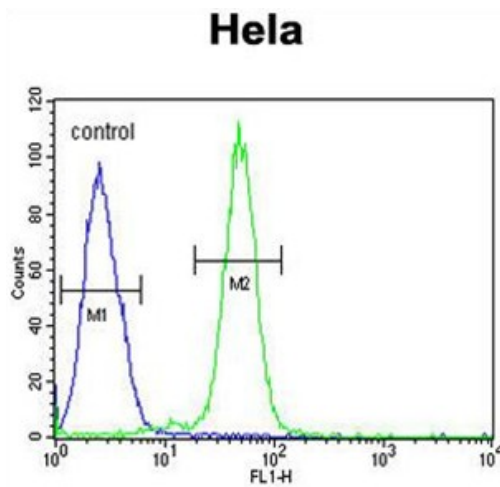
**Protein Families:** Druggable Genome

**Protein Pathways:** Alanine, aspartate and glutamate metabolism

**Product images:**



Western blot analysis of AGXT2 Antibody (C-term) in HeLa cell line lysates (35 ug/lane). AGXT2 (arrow) was detected using the purified Pab.



AGXT2 Antibody (C-term) flow cytometric analysis of HeLa cells (right histogram) compared to a negative control cell (left histogram). FITC-conjugated goat-anti-rabbit secondary antibodies were used for the analysis.