

## Product datasheet for **AP50114PU-N**

### AGR3 (C-term) Rabbit Polyclonal Antibody

#### Product data:

Product Type:	Primary Antibodies
Applications:	FC, IHC, WB
Recommended Dilution:	<b>ELISA:</b> 1/1000. <b>Western blotting:</b> 1/100-1/500. <b>Flow Cytometry:</b> 1/10-1/50. <b>Immunohistochemistry on Paraffin Sections:</b> 1/50-1/100.
Reactivity:	Human
Host:	Rabbit
Isotype:	Ig
Clonality:	Polyclonal
Immunogen:	KLH conjugated synthetic peptide between 126~155 amino acids from the C-terminal region of Human AGR3
Specificity:	This antibody recognizes Human AGR3 (C-term).
Formulation:	PBS containing 0.09% (W/V) sodium azide as preservative State: Aff - Purified State: Liquid purified Ig fraction
Concentration:	lot specific
Purification:	Protein A column, followed by peptide affinity purification
Conjugation:	Unconjugated
Storage:	Store the antibody undiluted at 2-8°C for one month or (in aliquots) at -20°C for longer. Avoid repeated freezing and thawing.
Stability:	Shelf life: one year from despatch.
Gene Name:	anterior gradient 3, protein disulphide isomerase family member
Database Link:	<a href="#">Entrez Gene 155465 Human Q8TD06</a>



[View online »](#)

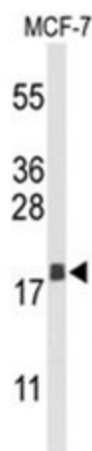
**Background:** AGR3 (Anterior Gradient 3) protein, also known as AG3 (hAG3, HAG3 in human), or BCMP11, is a secreted cytoplasmic protein which is involved in metastasis induction and p53 tumour suppressor inhibition. It may serve as molecular marker and potential therapeutic target for hormone-responsive breast tumours. Its *Xenopus* homolog is associated with anteroposterior fate determination during early development.

**Synonyms:** BCMP11, HAG3, HAG-3

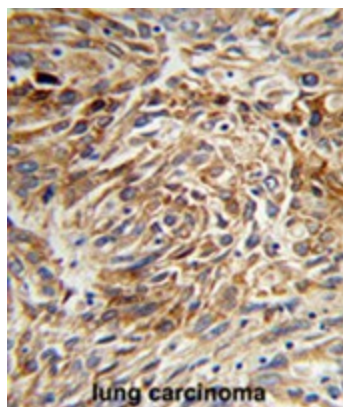
**Note:** **Molecular Weight:** 19171 Da

**Protein Families:** Secreted Protein

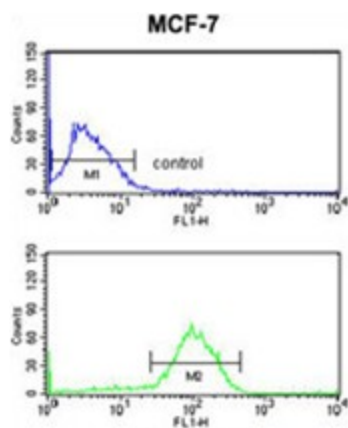
### Product images:



Western blot analysis of AGR3 Antibody (C-term) in MCF-7 cell line lysates (35ug/lane). AGR3 (arrow) was detected using the purified Pab.



Formalin-fixed and paraffin-embedded human lung carcinoma reacted with AGR3 Antibody (C-term), which was peroxidase-conjugated to the secondary antibody, followed by DAB staining. This data demonstrates the use of this antibody for immunohistochemistry; clinical relevance has not been evaluated.



AGR3 Antibody (C-term) flow cytometry analysis of MCF-7 cells (bottom histogram) compared to a negative control cell (top histogram). FITC-conjugated goat-anti-rabbit secondary antibodies were used for the analysis.