

Product datasheet for **AP50113PU-N**

GPAT4 (N-term) Rabbit Polyclonal Antibody

Product data:

Product Type:	Primary Antibodies
Applications:	WB
Recommended Dilution:	ELISA: 1/1000. Western blotting: 1/100 - 1/500.
Reactivity:	Human, Mouse
Host:	Rabbit
Isotype:	Ig
Clonality:	Polyclonal
Immunogen:	KLH conjugated synthetic peptide between 52~82 amino acids from the N-terminal region of human AGPAT6
Specificity:	This antibody reacts to AGPAT6.
Formulation:	PBS containing 0.09% (W/V) sodium azide as preservative State: Aff - Purified State: Liquid purified Ig fraction
Concentration:	lot specific
Purification:	Affinity chromatography on Protein A
Conjugation:	Unconjugated
Storage:	Store the antibody undiluted at 2-8°C for one month or (in aliquots) at -20°C for longer. Avoid repeated freezing and thawing.
Stability:	Shelf life: one year from despatch.
Gene Name:	glycerol-3-phosphate acyltransferase 4
Database Link:	Entrez Gene 102247 Mouse Entrez Gene 137964 Human Q86UL3
Background:	Lysophosphatidic acid acyltransferases (EC 2.3.1.51) catalyze the conversion of lysophosphatidic acid (LPA) to phosphatidic acid (PA). LPA and PA are involved in signal transduction and lipid biosynthesis.
Synonyms:	GPAT4, 1-AGP acyltransferase 6, LPAAT-zeta

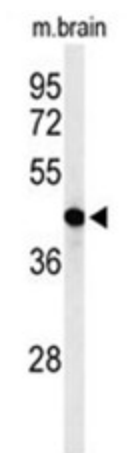


[View online »](#)

Note: **Molecular Weight:** 52071 Da

Protein Families: Transmembrane

Protein Pathways: Ether lipid metabolism, Glycerolipid metabolism, Glycerophospholipid metabolism, Metabolic pathways

Product images:

Western blot analysis of AGPAT6 Antibody (N-term) in mouse brain tissue lysates (35 ug/lane).AGPAT6 (arrow) was detected using the purified Pab