

Product datasheet for **AP50110PU-N**

AGFG1 (N-term) Rabbit Polyclonal Antibody

Product data:

Product Type:	Primary Antibodies
Applications:	WB
Recommended Dilution:	ELISA: 1/1000. Western blotting: 1/100 - 1/500.
Reactivity:	Human
Host:	Rabbit
Isotype:	Ig
Clonality:	Polyclonal
Immunogen:	KLH conjugated synthetic peptide between 1-30 amino acids from the N-terminal region of human AGFG1
Specificity:	This antibody reacts to AGFG1.
Formulation:	PBS containing 0.09% (W/V) sodium azide as preservative State: Aff - Purified State: Liquid purified Ig fraction
Concentration:	lot specific
Purification:	Affinity chromatography on Protein A
Conjugation:	Unconjugated
Storage:	Store the antibody undiluted at 2-8°C for one month or (in aliquots) at -20°C for longer. Avoid repeated freezing and thawing.
Stability:	Shelf life: one year from despatch.
Gene Name:	ArfGAP with FG repeats 1
Database Link:	Entrez Gene 3267 Human P52594
Background:	The protein encoded by this gene is related to nucleoporins, a class of proteins that mediate nucleocytoplasmic transport. The encoded protein binds the activation domain of the human immunodeficiency virus Rev protein when Rev is assembled onto its RNA target, and is required for the nuclear export of Rev-directed RNAs. Multiple transcript variants encoding different isoforms have been found for this gene.

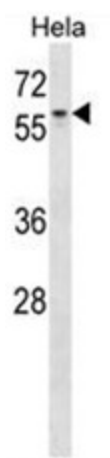


[View online »](#)

Synonyms: HIV-1 Rev-binding protein, RAB, RIP, Rev-interacting protein

Note: **Molecular Weight:** 58260 Da

Product images:



AGFG1 Antibody (N-term) western blot analysis in HeLa cell line lysates (35 ug/lane). This demonstrates the AGFG1 antibody detected the AGFG1 protein (arrow).