

Product datasheet for **AP50106PU-N**

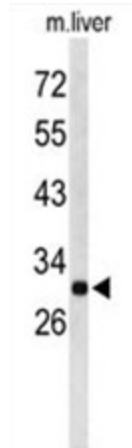
AFMID (N-term) Rabbit Polyclonal Antibody

Product data:

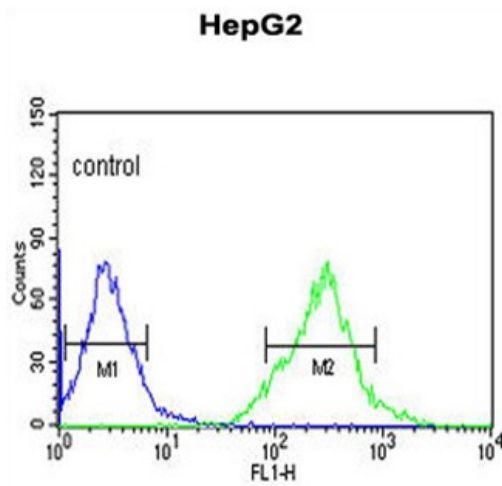
Product Type:	Primary Antibodies
Applications:	FC, WB
Recommended Dilution:	ELISA: 1/1000. Western blotting: 1/100 - 1/500. Flow cytometric: 1/10 - 1/50.
Reactivity:	Human, Mouse
Host:	Rabbit
Isotype:	Ig
Clonality:	Polyclonal
Immunogen:	KLH conjugated synthetic peptide between 63~92 amino acids from the N-terminal region of human AFMID
Specificity:	This antibody reacts to AFMID.
Formulation:	PBS containing 0.09% (W/V) sodium azide as preservative State: Aff - Purified State: Liquid purified Ig fraction
Concentration:	lot specific
Purification:	Affinity chromatography on Protein A
Conjugation:	Unconjugated
Storage:	Store the antibody undiluted at 2-8°C for one month or (in aliquots) at -20°C for longer. Avoid repeated freezing and thawing.
Stability:	Shelf life: one year from despatch.
Gene Name:	arylformamidase
Database Link:	Entrez Gene 125061 Human Q63HM1
Synonyms:	Kynurenine formamidase, Arylformamidase, N-formylkynurenine formamidase, FKf
Note:	Molecular Weight: 33992 Da
Protein Pathways:	Glyoxylate and dicarboxylate metabolism, Metabolic pathways, Tryptophan metabolism



[View online »](#)

Product images:


Western blot analysis of AFMID Antibody (N-term) in mouse liver tissue lysates (35 ug/lane). AFMID (arrow) was detected using the purified Pab.



AFMID Antibody (N-term) flow cytometric analysis of HepG2 cells (right histogram) compared to a negative control cell (left histogram). FITC-conjugated goat-anti-rabbit secondary antibodies were used for the analysis.