

Product datasheet for **AP50105PU-N**

AFM (N-term) Rabbit Polyclonal Antibody

Product data:

Product Type:	Primary Antibodies
Applications:	WB
Recommended Dilution:	ELISA: 1/1000. Western blotting: 1/50 - 1/100.
Reactivity:	Human
Host:	Rabbit
Isotype:	Ig
Clonality:	Polyclonal
Immunogen:	KLH conjugated synthetic peptide between 55–85 amino acids from the N-terminal region of human AFM
Specificity:	This antibody reacts to Afamin.
Formulation:	PBS containing 0.09% (W/V) sodium azide as preservative State: Purified State: Liquid purified Ig fraction
Concentration:	lot specific
Purification:	Saturated Ammonium Sulfate (SAS) precipitation
Conjugation:	Unconjugated
Storage:	Store the antibody undiluted at 2-8°C for one month or (in aliquots) at -20°C for longer. Avoid repeated freezing and thawing.
Stability:	Shelf life: one year from despatch.
Gene Name:	afamin
Database Link:	Entrez Gene 173 Human P43652
Background:	AFM is a member of the albumin gene family, which is comprised of four genes that localize to chromosome 4 in a tandem arrangement. These four genes encode structurally-related serum transport proteins that are known to be evolutionarily related. The protein encoded by this gene is regulated developmentally, expressed in the liver and secreted into the bloodstream.



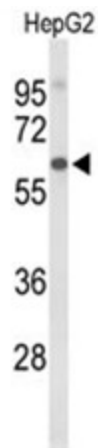
[View online »](#)

Synonyms: ALB2, ALBA, Alpha-albumin

Note: **Molecular Weight:** 69069 Da

Protein Families: Druggable Genome, Secreted Protein

Product images:



Western blot analysis of AFM Antibody (N-term) in HepG2 cell line lysates (35ug/lane). AFM (arrow) was detected using the purified Pab.