

Product datasheet for **AP50104PU-N**

AFAP (AFAP1) (C-term) Rabbit Polyclonal Antibody

Product data:

| | |
|-----------------------|---|
| Product Type: | Primary Antibodies |
| Applications: | WB |
| Recommended Dilution: | ELISA: 1/1000. Western blotting: 1/100 - 1/500. |
| Reactivity: | Human |
| Host: | Rabbit |
| Isotype: | Ig |
| Clonality: | Polyclonal |
| Immunogen: | KLH conjugated synthetic peptide between 550-580 amino acids from the C-terminal region of human AFAP1 |
| Specificity: | This antibody reacts to AFAP1. |
| Formulation: | PBS containing 0.09% (W/V) sodium azide as preservative State: Aff - Purified State: Liquid purified Ig fraction |
| Concentration: | lot specific |
| Purification: | Affinity chromatography on Protein A |
| Conjugation: | Unconjugated |
| Storage: | Store the antibody undiluted at 2-8°C for one month or (in aliquots) at -20°C for longer. Avoid repeated freezing and thawing. |
| Stability: | Shelf life: one year from despatch. |
| Gene Name: | actin filament associated protein 1 |
| Database Link: | Entrez Gene 60312 Human Q8N556 |
| Background: | The protein encoded by this gene is a Src binding partner. It may represent a potential modulator of actin filament integrity in response to cellular signals, and may function as an adaptor protein by linking Src family members and/or other signaling proteins to actin filaments. Multiple transcript variants encoding different isoforms have been found for this gene. |

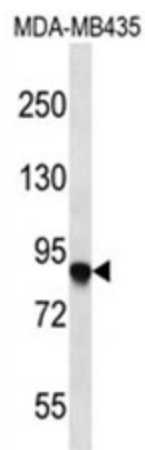


[View online »](#)

Synonyms: AFAP-110

Note: **Molecular Weight:** 80725 Da

Product images:



AFAP1 Antibody (C-term) western blot analysis in MDA-MB435 cell line lysates (35 ug/lane). This demonstrates the AFAP1 antibody detected the AFAP1 protein (arrow).