

## Product datasheet for **AP50101PU-N**

### AE binding protein 1 (AEBP1) (Center) Rabbit Polyclonal Antibody

#### Product data:

Product Type:	Primary Antibodies
Applications:	WB
Recommended Dilution:	<b>ELISA:</b> 1/1000. <b>Western blotting:</b> 1/100 - 1/500.
Reactivity:	Human, Mouse
Host:	Rabbit
Isotype:	Ig
Clonality:	Polyclonal
Immunogen:	KLH conjugated synthetic peptide between 341-372 amino acids from the Central region of human AEBP1
Specificity:	This antibody reacts to AEBP1.
Formulation:	PBS containing 0.09% (W/V) sodium azide as preservative State: Aff - Purified State: Liquid purified Ig fraction
Concentration:	lot specific
Purification:	Affinity chromatography on Protein A
Conjugation:	Unconjugated
Storage:	Store the antibody undiluted at 2-8°C for one month or (in aliquots) at -20°C for longer. Avoid repeated freezing and thawing.
Stability:	Shelf life: one year from despatch.
Gene Name:	AE binding protein 1
Database Link:	<a href="#">Entrez Gene 165 Human</a> <a href="#">Q8IUX7</a>



[View online »](#)

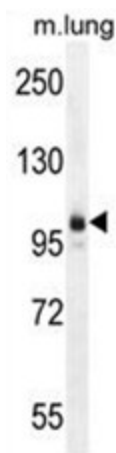
**Background:** The adipocyte enhancer binding protein 1 is a transcriptional repressor with carboxypeptidase (CP) activity. This protein binds to a regulatory sequence, adipocyte enhancer 1 (AE-1), located in the proximal promoter region of the adipose P2 (aP2) gene, which encodes the adipocyte fatty-acid binding protein. It is characterized as a member of the regulatory B-like CP family. This protein seems to be activated by a novel mechanism, whereby the direct binding of DNA enhances its protease activity. Adipocyte-enhancer binding protein 1 may play a role in differentiated vascular smooth muscle cells.

**Synonyms:** AE-binding protein 1

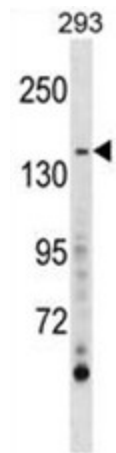
**Note:** **Molecular Weight:** 130929 Da

**Protein Families:** Druggable Genome, Protease, Transcription Factors

**Product images:**



AEBP1 Antibody (Center) western blot analysis in mouse lung tissue lysates (35ug/lane).This demonstrates the AEBP1 antibody detected the AEBP1 protein (arrow).



AEBP1 Antibody (Center) western blot analysis in 293 cell line lysates (35 ug/lane).This demonstrates the AEBP1 antibody detected the AEBP1 protein (arrow).