

Product datasheet for **AP50094PU-N**

ADI1 (Center) Rabbit Polyclonal Antibody

Product data:

Product Type:	Primary Antibodies
Applications:	WB
Recommended Dilution:	ELISA: 1/1000. Western blotting: 1/100 - 1/500.
Reactivity:	Human
Host:	Rabbit
Isotype:	Ig
Clonality:	Polyclonal
Immunogen:	KLH conjugated synthetic peptide between 87-116 amino acids from the Central region of human ADI1
Specificity:	This antibody reacts to ADI1 / MTCBP1.
Formulation:	PBS containing 0.09% (W/V) sodium azide as preservative State: Aff - Purified State: Liquid purified Ig fraction
Concentration:	lot specific
Purification:	Affinity chromatography on Protein A
Conjugation:	Unconjugated
Storage:	Store the antibody undiluted at 2-8°C for one month or (in aliquots) at -20°C for longer. Avoid repeated freezing and thawing.
Stability:	Shelf life: one year from despatch.
Gene Name:	acireductone dioxygenase 1
Database Link:	Entrez Gene 55256 Human Q9BV57
Background:	This gene encodes an enzyme that belongs to the aci-reductone dioxygenase family of metal-binding enzymes, which are involved in methionine salvage. This enzyme may regulate mRNA processing in the nucleus, and may carry out different functions depending on its localization. Related pseudogenes have been defined on chromosomes 8 and 20.
Synonyms:	HMFT1638

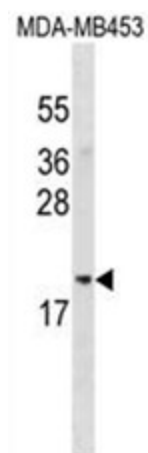


[View online »](#)

Note: **Molecular Weight:** 21498 Da

Protein Pathways: Cysteine and methionine metabolism, Metabolic pathways

Product images:



AD11 Antibody (Center) western blot analysis in MDA-MB453 cell line lysates (35 ug/lane). This demonstrates the AD11 antibody detected the AD11 protein (arrow).