

Product datasheet for **AP50091PU-N**

ADH6 (Center) Rabbit Polyclonal Antibody

Product data:

Product Type:	Primary Antibodies
Applications:	FC, IHC, WB
Recommended Dilution:	ELISA: 1/1000. Western blotting: 1/50 - 1/100 Immunohistochemistry: 1/50 - 1/100. Flow cytometric: 1/10 - 1/50.
Reactivity:	Human
Host:	Rabbit
Isotype:	Ig
Clonality:	Polyclonal
Immunogen:	KLH conjugated synthetic peptide between 217~247 amino acids from the Center region of human ADH6
Specificity:	This antibody reacts to Alcohol dehydrogenase 6.
Formulation:	PBS containing 0.09% (W/V) sodium azide as preservative State: Purified State: Liquid purified Ig fraction
Concentration:	lot specific
Purification:	Saturated Ammonium Sulfate (SAS) precipitation
Conjugation:	Unconjugated
Storage:	Store the antibody undiluted at 2-8°C for one month or (in aliquots) at -20°C for longer. Avoid repeated freezing and thawing.
Stability:	Shelf life: one year from despatch.
Gene Name:	alcohol dehydrogenase 6 (class V)
Database Link:	Entrez Gene 130 Human P28332



[View online »](#)

Background: ADH6 encodes class V alcohol dehydrogenase, which is a member of the alcohol dehydrogenase family. Members of this family metabolize a wide variety of substrates, including ethanol, retinol, other aliphatic alcohols, hydroxysteroids, and lipid peroxidation products. This protein is expressed in the stomach as well as in the liver, and it contains a glucocorticoid response element upstream of its 5' UTR, which is a steroid hormone receptor binding site.

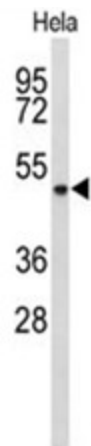
Synonyms: ADH-5

Note: **Molecular Weight:** 39089 Da

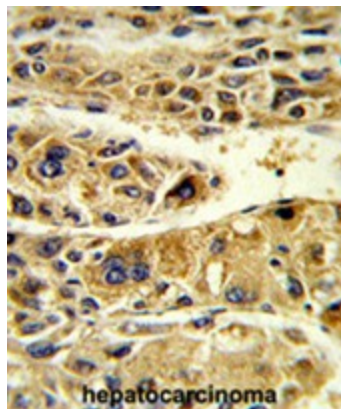
Protein Families: Druggable Genome

Protein Pathways: Drug metabolism - cytochrome P450, Fatty acid metabolism, Glycolysis / Gluconeogenesis, Metabolic pathways, Metabolism of xenobiotics by cytochrome P450, Retinol metabolism, Tyrosine metabolism

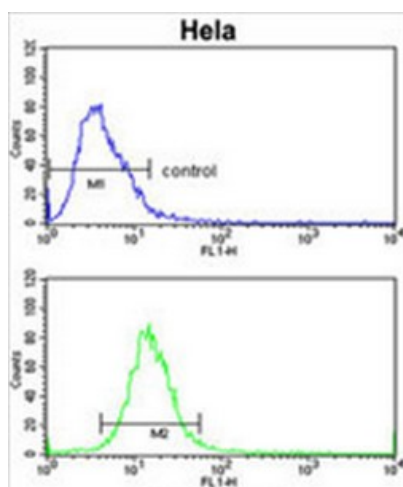
Product images:



Western blot analysis of ADH6 Antibody (Center) in HeLa cell line lysates (35ug/lane). ADH6 (arrow) was detected using the purified Pab



Formalin-fixed and paraffin-embedded human hepatocarcinoma reacted with ADH6 Antibody (Center), which was peroxidase-conjugated to the secondary antibody, followed by DAB staining. This data demonstrates the use of this antibody for immunohistochemistry; clinical relevance has not been evaluated.



ADH6 Antibody (Center) flow cytometric analysis of HeLa cells (bottom histogram) compared to a negative control cell (top histogram). FITC-conjugated goat-anti-rabbit secondary antibodies were used for the analysis.