

Product datasheet for **AP50086PU-N**

ADCY2 (Center) Rabbit Polyclonal Antibody

Product data:

Product Type:	Primary Antibodies
Applications:	WB
Recommended Dilution:	ELISA: 1/1000. Western blotting: 1/50 - 1/100.
Reactivity:	Human
Host:	Rabbit
Isotype:	Ig
Clonality:	Polyclonal
Immunogen:	KLH conjugated synthetic peptide between 458-489 amino acids from the Central region of human ADCY2
Specificity:	This antibody reacts to Adenylate cyclase type 2.
Formulation:	PBS containing 0.09% (W/V) sodium azide as preservative State: Purified State: Liquid purified Ig fraction
Concentration:	lot specific
Purification:	Saturated Ammonium Sulfate (SAS) precipitation
Conjugation:	Unconjugated
Storage:	Store the antibody undiluted at 2-8°C for one month or (in aliquots) at -20°C for longer. Avoid repeated freezing and thawing.
Stability:	Shelf life: one year from despatch.
Gene Name:	adenylate cyclase 2 (brain)
Database Link:	Entrez Gene 108 Human Q08462
Background:	This gene encodes a member of the family of adenylate cyclases, which are membrane-associated enzymes that catalyze the formation of the secondary messenger cyclic adenosine monophosphate (cAMP). This enzyme is insensitive to Ca(2+)/calmodulin, and is stimulated by the G protein beta and gamma subunit complex.
Synonyms:	ADCY2, KIAA1060, Adenylate cyclase type II, ATP pyrophosphate-lyase 2, Adenylyl cyclase 2



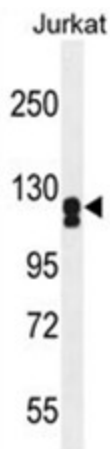
[View online »](#)

Note: **Molecular Weight:** 123603 Da

Protein Families: Druggable Genome, Transmembrane

Protein Pathways: Calcium signaling pathway, Chemokine signaling pathway, Dilated cardiomyopathy, Gap junction, GnRH signaling pathway, Melanogenesis, Oocyte meiosis, Progesterone-mediated oocyte maturation, Purine metabolism, Vascular smooth muscle contraction

Product images:



ADCY2 Antibody (Center) western blot analysis in Jurkat cell line lysates (35 ug/lane). This demonstrates the ADCY2 antibody detected the ADCY2 protein (arrow).