

## Product datasheet for **AP50081PU-N**

### ADAMDEC1 (N-term) Rabbit Polyclonal Antibody

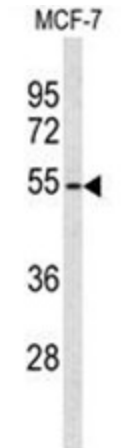
#### Product data:

Product Type:	Primary Antibodies
Applications:	FC, IHC, WB
Recommended Dilution:	<b>ELISA:</b> 1/1000. <b>Western blotting:</b> 1/50 - 1/100. <b>Immunohistochemistry:</b> 1/50 - 1/100.
Reactivity:	Human
Host:	Rabbit
Isotype:	Ig
Clonality:	Polyclonal
Immunogen:	KLH conjugated synthetic peptide between 47~76 amino acids from the N-terminal region of human ADAMDEC1
Specificity:	This antibody reacts to ADAMDEC1.
Formulation:	PBS containing 0.09% (W/V) sodium azide as preservative State: Purified State: Liquid purified Ig fraction
Concentration:	lot specific
Purification:	Saturated Ammonium Sulfate (SAS) precipitation
Conjugation:	Unconjugated
Storage:	Store the antibody undiluted at 2-8°C for one month or (in aliquots) at -20°C for longer. Avoid repeated freezing and thawing.
Stability:	Shelf life: one year from despatch.
Gene Name:	ADAM like decysin 1
Database Link:	<a href="#">Entrez Gene 27299 Human O15204</a>
Synonyms:	ADAM-like protein decysin 1
Note:	<b>Molecular Weight:</b> 52775 Da
Protein Families:	Druggable Genome, Secreted Protein

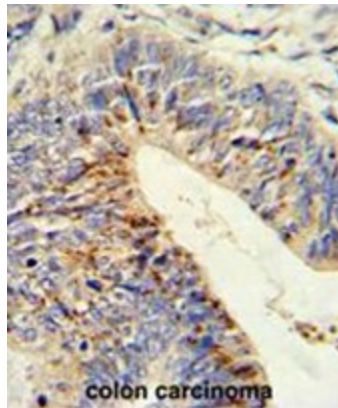


[View online »](#)

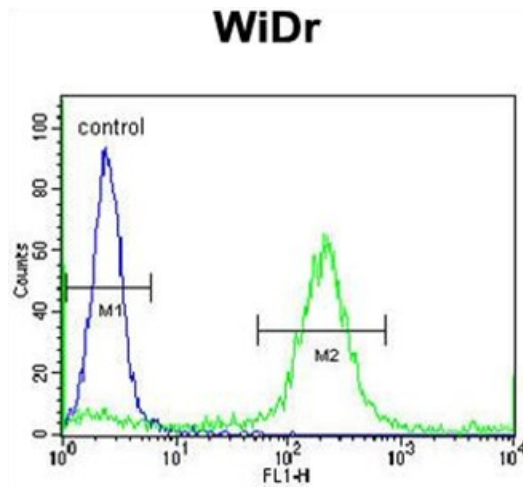
Product images:



Western blot analysis of ADAMDEC1 Antibody (N-term) in MCF-7 cell line lysates (35 ug/lane). ADAMDEC1 (arrow) was detected using the purified Pab.



Formalin-fixed and paraffin-embedded human colon carcinoma reacted with ADAMDEC1 Antibody (N-term), which was peroxidase-conjugated to the secondary antibody, followed by DAB staining. This data demonstrates the use of this antibody for immunohistochemistry; clinical relevance has not been evaluated.



ADAMDEC1 Antibody (N-term) flow cytometric analysis of WiDr cells (right histogram) compared to a negative control cell (left histogram). FITC-conjugated goat-anti-rabbit secondary antibodies were used for the analysis.