

Product datasheet for **AP50080PU-N**

ADAM23 (C-term) Rabbit Polyclonal Antibody

Product data:

Product Type:	Primary Antibodies
Applications:	WB
Recommended Dilution:	ELISA: 1/1000. Western blotting: 1/100 - 1/500.
Reactivity:	Human
Host:	Rabbit
Isotype:	Ig
Clonality:	Polyclonal
Immunogen:	KLH conjugated synthetic peptide between 802-831 amino acids from the C-terminal region of human ADAM23
Specificity:	This antibody reacts to ADAM23.
Formulation:	PBS containing 0.09% (W/V) sodium azide as preservative State: Aff - Purified State: Liquid purified Ig fraction
Concentration:	lot specific
Purification:	Affinity chromatography on Protein A
Conjugation:	Unconjugated
Storage:	Store the antibody undiluted at 2-8°C for one month or (in aliquots) at -20°C for longer. Avoid repeated freezing and thawing.
Stability:	Shelf life: one year from despatch.
Gene Name:	ADAM metallopeptidase domain 23
Database Link:	Entrez Gene 8745 Human O75077



[View online »](#)

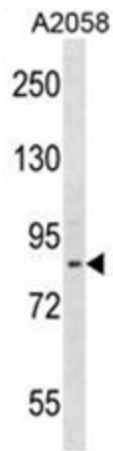
Background: This gene encodes a member of the ADAM (a disintegrin and metalloprotease domain) family. Members of this family are membrane-anchored proteins structurally related to snake venom disintegrins, and have been implicated in a variety of biological processes involving cell-cell and cell-matrix interactions, including fertilization, muscle development, and neurogenesis. This gene is highly expressed in the brain and may function as an integrin ligand in the brain.

Synonyms: MDC3, MDC-3

Note: **Molecular Weight:** 91926 Da

Protein Families: Druggable Genome, Protease, Secreted Protein, Transmembrane

Product images:



ADAM23 Antibody (C-term) western blot analysis in A2058 cell line lysates (35 ug/lane). This demonstrates the ADAM23 antibody detected the ADAM23 protein (arrow).