

Product datasheet for **AP50078PU-N**

ADAM19 (Center) Rabbit Polyclonal Antibody

Product data:

Product Type:	Primary Antibodies
Applications:	FC, IHC, WB
Recommended Dilution:	ELISA: 1/1000. Western blotting: 1/50-1/100. Flow Cytometry: 1/10-1/50. Immunohistochemistry: 1/50-1/100.
Reactivity:	Human
Host:	Rabbit
Isotype:	Ig
Clonality:	Polyclonal
Immunogen:	KLH conjugated synthetic peptide between 207-236 amino acids from the Central region of Human ADAM19.
Specificity:	This antibody reacts to ADAM19.
Formulation:	PBS containing 0.09% (W/V) Sodium Azide as preservative State: Purified State: Liquid purified Ig fraction
Concentration:	lot specific
Purification:	Saturated Ammonium Sulfate (SAS) precipitation
Conjugation:	Unconjugated
Storage:	Store the antibody undiluted at 2-8°C for one month or (in aliquots) at -20°C for longer. Avoid repeated freezing and thawing.
Stability:	Shelf life: one year from despatch.
Gene Name:	ADAM metallopeptidase domain 19
Database Link:	Entrez Gene 8728 Human Q9H013



[View online »](#)

Background:

This gene encodes a member of the ADAM (a disintegrin and metalloprotease domain) family. Members of this family are membrane-anchored proteins structurally related to snake venom disintegrins, and have been implicated in a variety of biological processes involving cell-cell and cell-matrix interactions, including fertilization, muscle development, and neurogenesis. This member is a type I transmembrane protein and serves as a marker for dendritic cell differentiation. It has also been demonstrated to be an active metalloproteinase, which may be involved in normal physiological and pathological processes such as cells migration, cell adhesion, cell-cell and cell-matrix interactions, and signal transduction.

Synonyms:

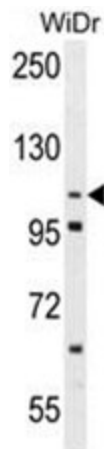
Meltrin-beta, FKSG34

Note:

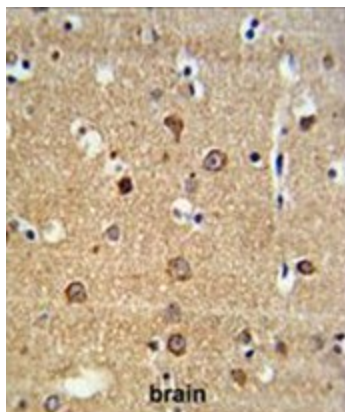
Molecular Weight: 104997 Da

Protein Families:

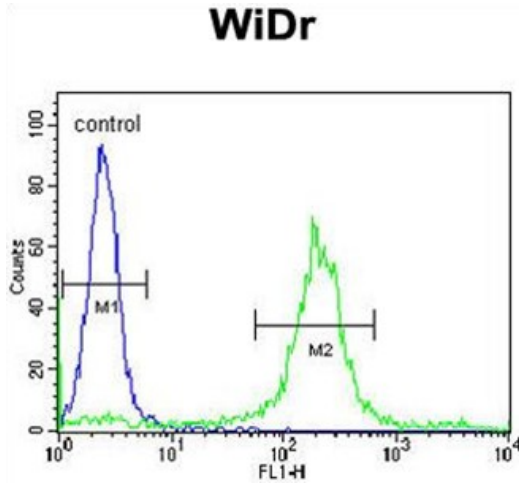
Druggable Genome, Transmembrane

Product images:

Western blot analysis of ADAM19 Antibody (Center) in WiDr cell line lysates (35 ug/lane). ADAM19 (arrow) was detected using the purified Pab.



ADAM19 Antibody (Center) IHC analysis in formalin fixed and paraffin embedded brain tissue followed by peroxidase conjugation of the secondary antibody and DAB staining. This data demonstrates the use of the ADAM19 Antibody (Center) for immunohistochemistry. Clinical relevance has not been evaluated.



ADAM19 Antibody (Center) flow cytometric analysis of WiDr cells (right histogram) compared to a negative control cell (left histogram). FITC-conjugated goat-anti-rabbit secondary antibodies were used for the analysis.