

Product datasheet for **AP50073PU-N**

ACTR1A (Center) Rabbit Polyclonal Antibody

Product data:

| | |
|-----------------------|---|
| Product Type: | Primary Antibodies |
| Applications: | WB |
| Recommended Dilution: | ELISA: 1/1000. Western blotting: 1/100 - 1/500. |
| Reactivity: | Human, Mouse |
| Host: | Rabbit |
| Isotype: | Ig |
| Clonality: | Polyclonal |
| Immunogen: | KLH conjugated synthetic peptide between 97-126 amino acids from the Central region of human ACTR1A |
| Specificity: | This antibody reacts to Centractin alpha. |
| Formulation: | PBS containing 0.09% (W/V) sodium azide as preservative State: Aff - Purified State: Liquid purified Ig fraction |
| Concentration: | lot specific |
| Purification: | Affinity chromatography on Protein A |
| Conjugation: | Unconjugated |
| Storage: | Store the antibody undiluted at 2-8°C for one month or (in aliquots) at -20°C for longer. Avoid repeated freezing and thawing. |
| Stability: | Shelf life: one year from despatch. |
| Gene Name: | ARP1 actin-related protein 1 homolog A, centractin alpha |
| Database Link: | Entrez Gene 54130 Mouse Entrez Gene 10121 Human P61163 |



[View online »](#)

Background:

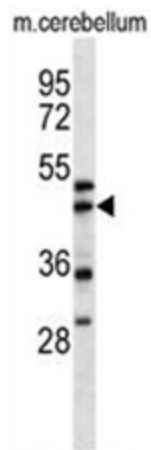
This gene encodes a 42.6 kD subunit of dynactin, a macromolecular complex consisting of 10-11 subunits ranging in size from 22 to 150 kD. Dynactin binds to both microtubules and cytoplasmic dynein. It is involved in a diverse array of cellular functions, including ER-to-Golgi transport, the centripetal movement of lysosomes and endosomes, spindle formation, chromosome movement, nuclear positioning, and axonogenesis. This subunit is present in 8-13 copies per dynactin molecule, and is the most abundant molecule in the dynactin complex. It is an actin-related protein, and is approximately 60% identical at the amino acid level to conventional actin.

Synonyms:

ACTR1A, CTRN1, ARP1

Note:

Molecular Weight: 42614 Da

Product images:

ACTR1A Antibody (Center) western blot analysis in mouse cerebellum tissue lysates (35ug/lane). This demonstrates the ACTR1A antibody detected the ACTR1A protein (arrow).