

Product datasheet for **AP50064PU-N**

Acetyl CoA synthetase (ACSS2) (N-term) Rabbit Polyclonal Antibody

Product data:

Product Type:	Primary Antibodies
Applications:	WB
Recommended Dilution:	ELISA: 1/1000. Western blotting: 1/100 - 1/500.
Reactivity:	Human, Mouse
Host:	Rabbit
Isotype:	Ig
Clonality:	Polyclonal
Immunogen:	KLH conjugated synthetic peptide between 38–68 amino acids from the N-terminal region of human ACSS2
Specificity:	This antibody reacts to ACSS2.
Formulation:	PBS containing 0.09% (W/V) sodium azide as preservative State: Aff - Purified State: Liquid purified Ig fraction
Concentration:	lot specific
Purification:	Affinity chromatography on Protein A
Conjugation:	Unconjugated
Storage:	Store the antibody undiluted at 2-8°C for one month or (in aliquots) at -20°C for longer. Avoid repeated freezing and thawing.
Stability:	Shelf life: one year from despatch.
Gene Name:	acyl-CoA synthetase short-chain family member 2
Database Link:	Entrez Gene 60525 Mouse Entrez Gene 55902 Human Q9NR19
Background:	ACSS2 is a cytosolic enzyme that catalyzes the activation of acetate for use in lipid synthesis and energy generation. The protein acts as a monomer and produces acetyl-CoA from acetate in a reaction that requires ATP.
Synonyms:	ACAS2, ACSA

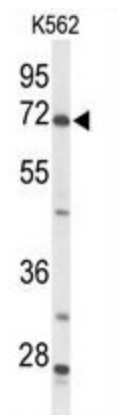


[View online »](#)

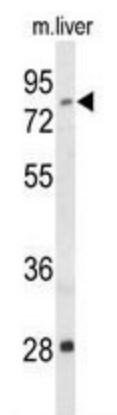
Note: **Molecular Weight:** 78580 Da

Protein Pathways: Glycolysis / Gluconeogenesis, Metabolic pathways, Propanoate metabolism, Pyruvate metabolism

Product images:



Western blot analysis of ACSS2 Antibody (N-term) in K562 cell line lysates (35 ug/lane). ACSS2 (arrow) was detected using the purified Pab.



Western blot analysis of ACSS2 Antibody (N-term) in mouse liver tissue lysates (35 ug/lane). ACSS2 (arrow) was detected using the purified Pab.