

Product datasheet for **AP50063PU-N**

ACSM1 (N-term) Rabbit Polyclonal Antibody

Product data:

Product Type:	Primary Antibodies
Applications:	FC, WB
Recommended Dilution:	ELISA: 1/1000. Western blotting: 1/100 - 1/500. Flow cytometric: 1/10 - 1/50.
Reactivity:	Human
Host:	Rabbit
Isotype:	Ig
Clonality:	Polyclonal
Immunogen:	KLH conjugated synthetic peptide between 27~57 amino acids from the N-terminal region of human ACSM1
Specificity:	This antibody reacts to ACSM1.
Formulation:	PBS containing 0.09% (W/V) sodium azide as preservative State: Aff - Purified State: Liquid purified Ig fraction
Concentration:	lot specific
Purification:	Affinity chromatography on Protein A
Conjugation:	Unconjugated
Storage:	Store the antibody undiluted at 2-8°C for one month or (in aliquots) at -20°C for longer. Avoid repeated freezing and thawing.
Stability:	Shelf life: one year from despatch.
Gene Name:	acyl-CoA synthetase medium-chain family member 1
Database Link:	Entrez Gene 116285 Human Q08AH1
Background:	ACSM1 has medium-chain fatty acid:CoA ligase activity with broad substrate specificity (in vitro). This protein acts on acids from C(4) to C(11) and on the corresponding 3-hydroxy-and 2,3-or 3,4-unsaturated acids (in vitro). This protein functions as GTP-dependent lipoate-activating enzyme that generates the substrate for lipoyltransferase.



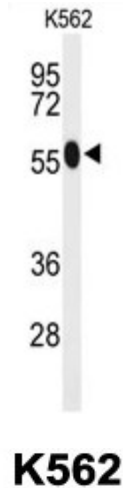
[View online »](#)

Synonyms: BUCS1, LAE, MACS1

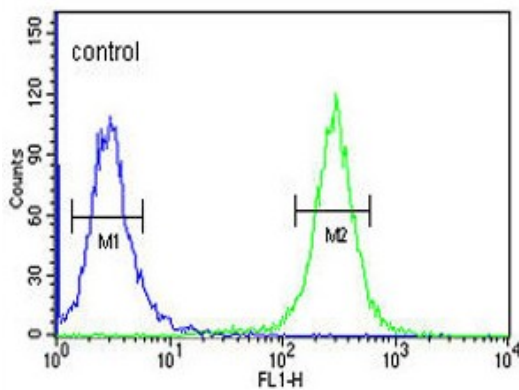
Note: **Molecular Weight:** 65273 Da

Protein Pathways: Butanoate metabolism, Metabolic pathways

Product images:



Western blot analysis of ACSM1 Antibody (N-term) in K562 cell line lysates (35ug/lane). ACSM1 (arrow) was detected using the purified Pab.



ACSM1 Antibody (N-term) (#AP9284a) flow cytometric analysis of K562 cells (right histogram) compared to a negative control cell (left histogram).FITC-conjugated goat-anti-rabbit secondary antibodies were used for the analysis.