

Product datasheet for **AP50060PU-N**

ACRC (GCNA) (C-term) Rabbit Polyclonal Antibody

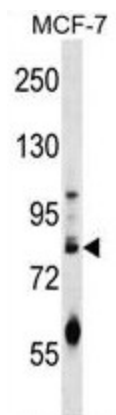
Product data:

Product Type:	Primary Antibodies
Applications:	WB
Recommended Dilution:	PeptideELISA: 1/1000. Western blotting: 1/100-1/500.
Reactivity:	Human
Host:	Rabbit
Isotype:	Ig
Clonality:	Polyclonal
Immunogen:	KLH conjugated synthetic peptide between 599-628 amino acids from the C-terminal region of human ACRC
Specificity:	This antibody reacts to ACRC.
Formulation:	PBS containing 0.09% (W/V) sodium azide as preservative State: Aff - Purified State: Liquid purified Ig fraction
Concentration:	lot specific
Purification:	Affinity chromatography on Protein A
Conjugation:	Unconjugated
Storage:	Store the antibody undiluted at 2-8°C for one month or (in aliquots) at -20°C for longer. Avoid repeated freezing and thawing.
Stability:	Shelf life: one year from despatch.
Gene Name:	acidic repeat containing
Database Link:	Entrez Gene 93953 Human Q96QF7
Background:	ACRC belongs to the serine-aspartate repeat-containing protein (SDr) family. It is detected in skeletal muscle, liver, kidney, pancreas, heart, lung and brain.
Synonyms:	NAAR1
Note:	Molecular Weight: 76112 Da



[View online »](#)

Product images:



ACRC Antibody (C-term) western blot analysis in MCF-7 cell line lysates (35 ug/lane). This demonstrates the ACRC antibody detected the ACRC protein (arrow).