

Product datasheet for **AP50058PU-N**

Acrosin (ACR) (Center) Rabbit Polyclonal Antibody

Product data:

Product Type:	Primary Antibodies
Applications:	FC, IHC, WB
Recommended Dilution:	ELISA: 1/1000. Western blotting: 1/50 - 1/100. Immunohistochemistry 1/50 - 1/100. Flow cytometric 1/10 - 1/50.
Reactivity:	Human
Host:	Rabbit
Isotype:	Ig
Clonality:	Polyclonal
Immunogen:	KLH conjugated synthetic peptide between 106~135 amino acids from the Center region of human ACR
Specificity:	This antibody reacts to Acrosin.
Formulation:	PBS containing 0.09% (W/V) sodium azide as preservative State: Purified State: Liquid purified Ig fraction
Concentration:	lot specific
Purification:	Saturated Ammonium Sulfate (SAS) precipitation
Conjugation:	Unconjugated
Storage:	Store the antibody undiluted at 2-8°C for one month or (in aliquots) at -20°C for longer. Avoid repeated freezing and thawing.
Stability:	Shelf life: one year from despatch.
Gene Name:	acrosin
Database Link:	Entrez Gene 49 Human P10323



[View online »](#)

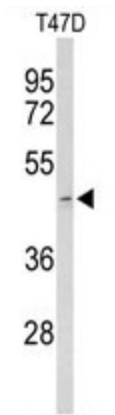
Background: ACR is the major proteinase present in the acrosome of mature spermatozoa. It is a typical serine proteinase with trypsin-like specificity. It is stored in the acrosome in its precursor form, proacrosin. The active enzyme functions in the lysis of the zona pellucida, thus facilitating penetration of the sperm through the innermost glycoprotein layers of the ovum. The mRNA for proacrosin is synthesized only in the postmeiotic stages of spermatogenesis. In humans proacrosin first appears in the haploid spermatids.

Synonyms: acrosin; ACRS; preproacrosin; proacrosin

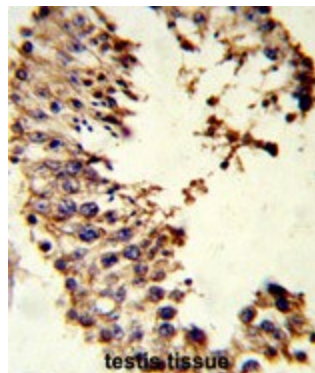
Note: **Molecular Weight:** 45847 Da

Protein Families: Druggable Genome, Protease

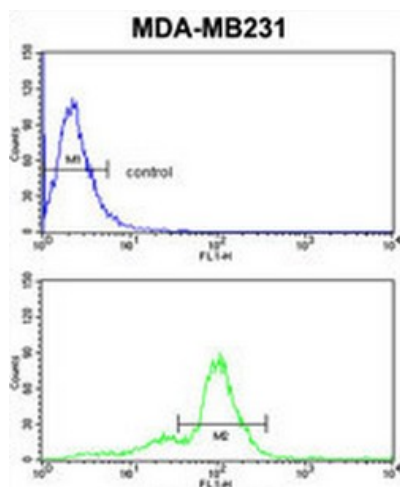
Product images:



Western blot analysis of ACR Antibody (Center) in T47D cell line lysates (35 ug/lane). ACR (arrow) was detected using the purified Pab.



Formalin-fixed and paraffin-embedded human testis tissue reacted with ACR Antibody (Center), which was peroxidase-conjugated to the secondary antibody, followed by DAB staining. This data demonstrates the use of this antibody for immunohistochemistry; clinical relevance has not been evaluated.



ACR Antibody (Center) flow cytometric analysis of MDA-MB231 cells (bottom histogram) compared to a negative control cell (top histogram). FITC-conjugated goat-anti-rabbit secondary antibodies were used for the analysis.